

Tulsa

EWI Connect

CHARTERED 1956

February 2025

LETTER FROM THE PRESIDENT

WARREN PROFESSIONAL BUILDING CORPORATION



Dear EWI Tulsa Sisters,

I believe February is a perfect month to LEAD BY EXAMPLE and follow the example Dr. King set for all of us. Martin Luther King Jr.'s vision of a Beloved Community was a global society where all people are treated with dignity and equality, and where racism and discrimination are replaced by love and understanding. Dr. King believed that this goal was achievable through collective action and a change in people's hearts. As we step into February, a month often associated with love and kindness, I want to take a moment to celebrate the incredible women in the Tulsa Chapter. Your dedication, hard work, and support for one another are truly inspiring. I'm so very proud to know all of you!

This month let's focus on the power of community and the strength we draw from each other. Whether it's through professional achievements, personal growth, or acts of kindness, every contribution you make enriches our collective experience.

"A genuine leader is not a searcher for consensus but a molder of consensus."

- Dr. Martin Luther King, Jr.

Peace and Love,

2024-2025

EWI Tulsa Chapter President



2024-2025 OFFICERS & DIRECTORS

PRESIDENT
SUSAN MILLER, WARREN PROFESSIONAL BUILDING CORP.

VICE PRESIDENT
DR. LAFONDA MURPHY, MOORE FUNERAL HOMES

SECRETARY
OSHA THOMPSON, T.D. WILLIAMSON

TREASURER
SARA SHAKLEE, TRUST COMPANY OF OKLAHOMA

SERGEANT-AT-ARMS
SARAH BOWEN, TULSA ZOO

B/C/DP DIRECTOR
JENNIFER MURPHY, TRINITY WOODS TULSA

MEMBERSHIP (RECRUITMENT)
AMY HENDERSON, TULSA OILERS

MEMBERSHIP (RETENTION)
SARAH ALFRED, HUMMINGBIRD.TECH

PROGRAMS
MARNIE CHOISNARD, HEALTH ZONE AT SAINT FRANCIS

COMMUNICATIONS
AMANDA GRACE, PROJECT HOPE WORLDWIDE

ADVISOR
JODY DAVIS, ACCENT MOVING, STORAGE & LOGISTICS

ADVISOR
FELICIA SENTER, TULSA TECH

ADVISOR
JANIS COHLMIA, TROPICAL PLANT DESIGN

Tulsa
ewiConnect
IN THIS ISSUE

- **President's Letter**
- **Monthly Chapter Meeting**
- **January Snow Day Highlights**
- **Member Spotlights**
- **Calendar of Events**
- **Events to Attend**
- **Announcements**
- **February Birthdays and Firm Anniversaries**
- **Information**
- **Contact**
- **About Us**



<https://www.facebook.com/ewitulsa>



<https://www.linkedin.com/company/ewi-tulsa>



<https://www.instagram.com/ewitulsa/>

EWI Corporate Web/Social Media



<https://ewiconnect.com>

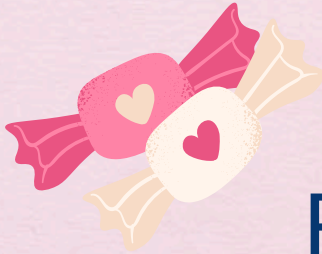


<https://www.facebook.com/ewicorp>

MONTHLY CHAPTER MEETING



CONNECTIONS | CAREERS | COMMUNITY



FEBRUARY CHAPTER MEETING

Date: Thursday, February 13

Time: 5:30 PM Social | 6:00 PM Meeting

Venue: Burnett Home Improvement
11202 E 61st St, Tulsa, OK 74133 (SW corner of 61st and Garnett)

Parking: Free parking available at meeting location

Dress: Business casual with a playful Valentine's twist—think hearts, bold reds/pinks/whites, and fun accessories.

Theme: "Galentine's Glam" – Pinks, reds and whites!

Speaker: Scott Burnett and team

Topic: Burnett Home Improvement

Cost: \$45 Members & Guests | \$30 Sustaining

Please [click here](#) to connect to the RSVP form.

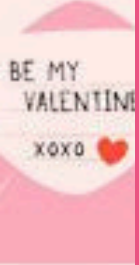
RSVP by noon on February 10 so that we may provide the appropriate seating arrangements and dinner servings. Please let us know if you have any dietary restrictions.

No-RSVP and No-Shows will be charged the full amount of the meeting fee. Please RSVP for regrets or attending!

Do you have a door prize you wish to donate?
If so, please contact Debbie Stumps at d.stumps@purview.com or (918)-520-0308 (cell)
As always, we appreciate your generosity!



January's Snow Day Highlights



MEMBER SPOTLIGHTS



DIANE JARVI

Diane retired from Osteopathic Founders Foundation on March 31, 2014, after 18 years of service. A representative for Osteopathic Founders Foundation from 2005-2013, she served on the B/C/DP, Communications and Fund Raising committees. An EWI Academy of Leadership Alumni graduate, "Picture This...an Image Year!" was Diane's theme when she was the EWI of Tulsa 2007-2008 President. From 1987-1991, Diane was the EWI representative for Hillcrest Medical Center and served as the Ways and Means Director and Secretary. Friendships from then to today continue to be an important part of her life.

In her retirement, Diane keeps busy spending time with friends, family and two teenage granddaughters, Sparrow and Starling. She enjoys her Philbrook Museum of Art, Tulsa Historical Society and Museum and Tulsa Foundation for Architecture memberships, as well as being a Tulsa Symphony Orchestra subscriber. Diane has been a Tulsa County Election Board precinct poll worker for many years. She also attends many complimentary learning opportunities including Tulsa City-County Library's "Travels with Tulsans," "Books Sandwiched In," "Music Sandwiched In," and OSU Master Gardeners' Lunch & Learn sessions. Diane enjoys coordinating the Community Garden Committee at Central Park Residences Condominiums. The volunteer garden consists of 14 large above-ground pots consisting of a variety of herbs, vegetables and pollinator plants.





MEMBER SPOTLIGHTS



TONYA SOLOMON

I am a native of Tulsa. I graduated from Will Rogers High School with a 4.2 GPA and on the National Honor Society. God brought Neal into my life in 2007, and we were married in 2008. I am blessed with my son, Tyler, his wife Jess, and our two grandsons, Madden and Knox. Tyler is a Police Officer for Tulsa, a 1st Seargent in the National Guard. Jess was just recognized as a top teacher in Oklahoma with a \$5000 award to her and one to her school, Freedom Elementary in Sapulpa. Madden is a freshman at Booker T Washington and on the swim team. Knox is a 5th grader at Eisenhower. He is the catcher for his baseball team. I also have a bonus son, Nathaneal. He is a senior at OSU. I have been in printing for over 40 years. I am the type that sets goals and then tries to exceed those goals. When we still did the Scholastic Classic, Lori Hart did over \$40,000. My goal was \$40,001. We did over \$41,000. I am thankful for EWI. The friendships are priceless. The lessons learned have helped me become a better person.

Fun fact: My 12th grade English teacher told my Mom, "you wouldn't think she is as smart as she is by looking at her."



AGGIE LANDRY

I made the move to Tulsa back in December 2023, and it's been amazing. I have three children who are adulting. In my free time, I love to ride my bike and hike trails, and I'm also attempting golf Cooking classes, mahjong and coffee have become a passion of mine.

I love going to events and trying new Restaurants!

Currently, I work for Amazon Web Services.

If you ever want to connect, you can reach me at aggielandry@gmail.com or 214-288-6466.

CALENDAR OF EWI TULSA EVENTS

February



FEBRUARY 6 - Communications Meeting, 11:30 AM,
Puck's @ WeStreet Ice Center with virtual option



FEBRUARY 12 - SAA Meeting, 3 PM,
Virtual



FEBRUARY 12 - Executive Breakfast
*Execs and Exec Reps only.



FEBRUARY 13 - February Chapter
Meeting



FEBRUARY 18 - Programs Meeting, 11 AM,
Virtual



FEBRUARY 18- Membership Meeting, 9:30 AM,
Virtual



FEBRUARY 19 - Membership Quarterly Lunch, 12 PM,
Roka Fusion



FEBRUARY 26- Board of Directors Meeting, 12:00 PM,
William Building



FEBRUARY 28 - February Birthdays
Lunch



TBA - BCDP Meeting



MARCH 13 - March Chapter Meeting, 6 PM
*THIS WILL BE A **REGULAR CHAPTER MEETING!**

EVENTS TO ATTEND

SAVE THE DATE

EWI of Tulsa

Executive Breakfast



FEBRUARY 12 | 7:15 AM CHECK IN
CEDAR RIDGE COUNTRY CLUB
10302 S GARNETT RD
BROKEN ARROW, OK 74011

EWI EXECUTIVE INVITATION TO FOLLOW

***Executives & Executive Reps Only**

[RSVP HERE](#)

EVENTS TO ATTEND

EWI
Quarterly
Luncheon

WEDNESDAY,
FEBRUARY 19TH

When: 12pm
Where: Roka Fusion Restaurant
1616 S. Utica St
Tulsa, OK 74104

[RSVP HERE](#)

EVENTS TO ATTEND

Please Join Us for Our 3rd Annual Galentine's Day Happy Hour!

WHEN: Wednesday, February 5th
from 4pm-6pm.

WHERE: A new GEM in town.
The Gem Rooftop Lounge
Inside the Candlewood Suites
Tulsa Hills-Jenks
219 S Gateway Place | Jenks, OK
74037

PARKING: Plenty of free parking
onsite.

Please look for the balloons at the
north entrance of the hotel.

An elevator will take you directly to
the rooftop bar inside the
entrance.

*3rd Annual Galentine's
Day Happy Hour*



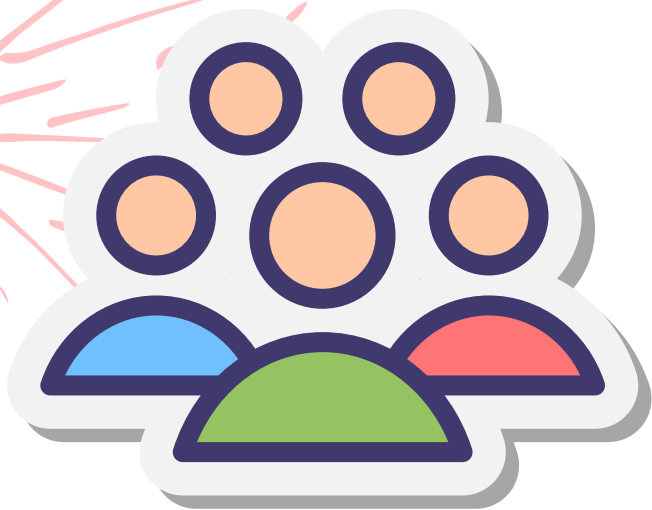
CJC Architects, Inc. **LDKERN'S**
CONTRACTORS



Wednesday, February 5th
4pm-6pm | Come & Go

SAVE THE DATE!

ANNOUNCEMENTS



COMMITTEES

YOU CAN JOIN A COMMITTEE AT ANY TIME! IF YOU'RE INTERESTED IN JOINING A COMMITTEE, REACH OUT TO THE BOARD MEMBER WHOSE COMMITTEE YOU'D LIKE TO JOIN!

COMMITTEES ARE A GREAT WAY TO GET TO KNOW FELLOW EWI MEMBERS!

CONTACT INFORMATION FOR BOARD MEMBERS IS ON THE "CONTACT" PAGE!

DOOR PRIZES

DO YOU LOVE WINNING DOOR PRIZES? OF COURSE YOU DO! IF YOU HAVE WON A DOOR PRIZE THIS YEAR, WE HOPE YOU WILL CONSIDER DONATING ONE FOR A FUTURE MEETING!

PAY IT FORWARD!

ALL DOOR PRIZE DONATIONS ARE ACCEPTED AND APPRECIATED. PLEASE CONTACT MARNIE CHOISNARD AT MACHOISNARD@SAINTFRANCIS.COM



MENTORS

If you would like to serve as a mentor to new members, please reach out to Angie Walters to volunteer!

angie@schsnake.com



BIRTHDAYS & FIRM ANNIVERSARIES

February Birthdays

2/8 Osha Thompson, T.D. Williamson
2/13 Diane Jarvi, Osteopathic Founders Foundation
2/16 Glenda Stoner, Hilti
2/22 Gina Shumard, Tedford Insurance
2/23 Debbie Stumps, Purview Life

February Anniversaries

Arvest Bank since 2014
Coldwell Banker Select since 2018
Enovation Controls since 2024



INFORMATION



NEWS & PHOTOS

Want your news or photos in the next Connect?
Email amanda@projecthopeworldwide.org



LIFE EVENTS

If you are having any life events that you wish to share with the Chapter, please send them to Sarah Bowen at sbowen@tulsazoo.org

We want to make sure the Chapter leadership and membership are kept informed of important happenings and are reaching out to support you! It is important to your Board of Directors that we celebrate your personal and professional accomplishments but also offer care and support in the event of surgery, illness or loss.





CONTACT

President

Susan Miller, Warren Professional Building Corp.
smiller@wpbctulsa.com
918-481-7953

Vice President

Dr. LaFonda Murphy, Moore Funeral Homes
lafonda@moorefuneral.com
918-744-1202

Secretary

Osha Thompson, T.D. Williamson
osha.thompson@tdwilliamson.com
918-978-8162

Treasurer

Sara Shaklee, Trust Company of Oklahoma
sshaklee@trustok.com
918-899-2594

Sergeant-at-Arms

Sarah Bowen, Tulsa Zoo
sbowen@tulsazoo.org
918-633-9331

B/C/DP Director

Jennifer Murphy, Trinity Woods Tulsa
jmurphy@trinitywoodstulsa.com
918-949-5634

Membership (Recruitment)

Amy Henderson, Tulsa Oilers
amy@tulsaoilers.com
918-697-8316

Membership (Retention)

Sarah Alfred, hummingbird.tech
salfred@hummingbird.tech
918.230.8522

Programs

Marnie Choisnard, HealthZone at Saint Francis
mchoisnard@saintfrancis.com
918-519-5611

Communications

Amanda Grace, Project Hope Worldwide
amanda@projecthopeworldwide.org
918-510-5454

Advisor

Janis Cohlmiia, Tropical Plant Design
janis@tropicalplantdesign.com
918-622-3400

Advisor

Jody Davis, Accent Moving, Storage & Logistics
jodydavis@accentmoving.com
918-671-5302

Advisor

Felicia Senter, Tulsa Tech
felicia.senter@tulsatech.edu
918-406-6106



CONTACT US

ABOUT US

OUR MISSION

EXECUTIVE WOMEN INTERNATIONAL (EWI) BRINGS TOGETHER KEY INDIVIDUALS FROM DIVERSE BUSINESSES FOR THE PURPOSE OF: PROMOTING MEMBER FIRMS, ENHANCING PERSONAL AND PROFESSIONAL DEVELOPMENT, AND ENCOURAGING COMMUNITY INVOLVEMENT.

OUR VISION

TO ENHANCE PROFESSIONAL GROWTH AND DEVELOPMENT WITHIN A DIVERSE GROUP OF WOMEN WHILE EMPOWERING THEM TO MAKE A DIFFERENCE AS THEY INSPIRE OTHERS.

OUR VALUES

INTEGRITY | EXCELLENCE | RESPECT | COLLABORATION

EWI

EWI OF TULSA IS A CHAPTER OF EXECUTIVE WOMEN INTERNATIONAL ("EWI"). IF YOU WANT TO KNOW MORE ABOUT EWI INCLUDING THE MANY DEVELOPMENT OPPORTUNITIES OR CONNECT WITH MEMBERS IN OTHER CHAPTERS, PLEASE TAKE THE TIME TO REVIEW THE EWI CORPORATE WEBSITE.