

# Tulsa EWI Connect

CHARTERED 1956

APRIL 2024

## LETTER FROM THE PRESIDENT

JODY DAVIS | ACCENT MOVING, STORAGE & LOGISTICS

*"April Showers Bring May Flowers"*

When you think about April, it can be associated with rain, hail, tornados, and the worst part of all.....allergies. April is a month of preparing, cultivating, and expecting change. Both the rain and the misery of allergies have a beautiful outcome of green grass, full lush trees, and beautiful flowers! But the challenges of getting to May can be inconvenient and uncomfortable. If you are like me, on those beautiful sunny and warm days I long to plant my flowers. But the random cold nights are a gentle reminder of why I wait a little longer. Honestly, living in Oklahoma there are days where we feel like all four seasons have happened within 24 hours. We wake up and it is cold (winter); the sun comes out late morning to warm our face (spring); our cars feel hot, so we turn on the AC (summer); and the sun goes down with a chill (fall).

I believe this is why we also refer to other areas of life and business as having "seasons". We are all in different and varying seasons, although there are not just four seasons. The Tulsa Chapter of EWI has seasons. We are currently in the season of sowing. We are recruiting and actively seeking new Member Firms during our March 2 Membership campaign. Soon we will experience the harvest, the reward of those companies becoming new Member Firms in our Chapter. We are also in a season of sowing into the lives of third-grade students at Emerson Montessori with the first phase of our 2024 Reading Rally project. The fruits of that labor will manifest in those kids becoming published authors. Our EWISP Mentors have been diligently working with local area high school students who have just completed and submitted their applications. The EWISP and ASIST winners will reap their rewards in May during our Scholarship Banquet. Thank you to all our Members who are sowing time and talents during this season for the Tulsa Chapter.

Whatever season you are in personally or professionally, I hope you know that your fellow EWI of Tulsa sisters are here to cheer you on, offer support, and dance in the April rain with you as you find your place in EWI *For Such A Time As This*.

Jody

Tulsa Chapter President 2023-2024

*For Such  
A Time  
As This*



## 2023-2024 OFFICERS & DIRECTORS

### PRESIDENT

JODY DAVIS ACCENT MOVING, STORAGE & LOGISTICS

### VICE PRESIDENT

SUSAN MILLER WARREN PROFESSIONAL BUILDING CORP.

### SECRETARY

ARQUICIA FRANKLIN

### TREASURER

SARA SHAKLEE TRUST COMPANY OF OKLAHOMA

### SERGEANT-AT-ARMS

JESSICA VAGIN THE STONEHAVEN

### B/C/DP DIRECTOR

DR. LAFONDA EHLERS MOORE FUNERAL HOMES

### MEMBERSHIP (RECRUITMENT)

SHARI HOLDMAN SUSAN G. KOMEN

### MEMBERSHIP (RETENTION)

AUBRY OEHLBERG FIRSTAR BANK

### PROGRAMS

TINESA SIEBERT THE UNIVERSITY OF OKLAHOMA FOUNDATION

### COMMUNICATIONS

PEYTON SHAFFER

### ADVISOR

TAMARA CONNER ONEOK, INC.

### ADVISOR

FELICIA SENTER TULSA TECH

### ADVISOR

JUDY RUSSELL ONEOK, INC.

### ADVISOR

JANIS COHLMIA TROPICAL PLANT DESIGN

# Tulsa ewiConnect

## IN THIS ISSUE

- **President's Letter**
- **Monthly Chapter Meeting**
- **March Chapter Meeting Highlights**
- **Executive Breakfast**
- **Thank You**
- **March Meeting Feedback**
- **Calendar of Events**
- **Announcements**
- **April Birthdays and Firm Anniversaries**
- **Information**
- **Contact**
- **About Us**



<https://www.facebook.com/ewitulsa/>



<https://www.linkedin.com/in/ewi-tulsa-1596791b9/>



<https://www.instagram.com/ewitulsa/>



[https://twitter.com/EWI\\_Tulsa](https://twitter.com/EWI_Tulsa)

# MONTHLY CHAPTER MEETING



## APRIL CHAPTER MEETING

### Join Us!

Please join us for a member firm night hosted by Kim Owens and the Bama Companies at Cabin Boys Brewery! Kim, Senior Director of People Systems and Community Relations, will be giving a presentation about The Bama Companies and their impact on our community.

**Theme:** Keep the themes going and wear spring colors!

**Date:** Thursday, April 11, 2024

**Time:** 5:30 PM Social | 6:00 PM Meeting

**Location:** Cabin Boys Brewery - 717 E 7th St, Tulsa

**Parking:** Free parking available at the meeting location (map attached)

**Cost:** \$45 Members & Guests | \$30 Sustaining

Please **click here** to connect to the RSVP form.

- RSVP by Thursday, April 4 so that we may provide the appropriate seating arrangements and dinner servings.
- Please let us know if you have any dietary restrictions.
- No RSVPs and no-shows to meetings will be invoiced! Business Meeting fees are mandatory for all members. While you will be invoiced regardless of attendance, please take the time to RSVP.

Do you have a door prize you wish to donate? If so, please contact Marnie Choisnard at [machoisnard@saintfrancis.com](mailto:machoisnard@saintfrancis.com). As always, we appreciate your generosity!

# MARCH CHAPTER MEETING HIGHLIGHTS



Amy Henderson, Tulsa Oilers



Amanda Grace, Project Hope Worldwide & Amanda Curtis, American Waste Control, Inc.



Marnie Knight, Admiral Express Office Supply; Eva Blair, T.C. Blair & Associates; & Marnie Choisnard, Health Zone at Saint Francis

# MARCH CHAPTER MEETING HIGHLIGHTS



# EXECUTIVE BREAKFAST



Vicki Dietz & Speaker, Kelly Morchower, Accenture



Arquicia Franklin  
& Marie Stephens, Dare to Develop Industries



Tyler Jones, Moody's Jewelry  
& Cindy Webb, Food Bank of Eastern Oklahoma



Sara Shaklee, Trust Company Oklahoma; Dr. LaFonda Ehlers,  
Moore Funeral Homes; Jessica Vagin, The Stonehaven;  
& Aubry Oehlberg, Firstar Bank

# EXECUTIVE BREAKFAST



Dr. LaFonda Ehlers & Dr. Joseph Moore, Moore Funeral Homes



Lynda Wingo, Miss Helen's Private School  
& Tim McNulty, Warren Professional Building Corp.



Scott Burnett, Burnett Home Improvement

## THANK YOU!

We were so honored to be one of the first groups hosted at the new WeStreet Ice Center by our Member Firm, Tulsa Oilers Entertainment Group. It was a fun Firm Night, and Amy Henderson was very generous by sponsoring all the door prizes for the meeting.

Watch the Connect for a future After-Hours Social or Social Lunch to be held at Puck's, the upstairs restaurant.

Again, thank you to Amy and the Tulsa Oilers for a wonderful March meeting.





# MARCH MEETING FEEDBACK

## THE MEAL

- Yummy!
- Nice variety of food!
- The Salmon was amazing. Chicken was good.
- Delicious - every bite!
- It was fabulous!
- I was very impressed with the food and the healthy options. Salmon was delicious.

## THE VENUE

- So fun! Appreciated all the extra touches for the meeting and the opportunity to tour.
- The meeting area was a nice spacious room. It was cool to tour the new venue.
- Very nice setup and the room was large enough for socializing and dinner.
- Exciting to see this new space.
- Wonderful new venue! Grateful to the Oilers for being our host.

## THE PRESENTATION

- Amy was an amazing host! Fun "green" night and lots of fun door prizes from Amy!
- Amy did a great job. I enjoyed learning all about the Tulsa Oilers.
- It was a pleasure to get to know Amy and the Oilers! So happy to have the Oilers as a member!
- Good to hear from Amy about all that our Tulsa Oilers are doing.
- Amy gave a great presentation! However, it was sometimes difficult to hear her without a microphone being provided.
- Enjoyed seeing the new facility and hearing what they offer!
- The tour guide was most gracious. Lovely facility.

# CALENDAR OF EVENTS



## APRIL

**APRIL 10:** B/C/DP COMMITTEE MEETING, 11:30 AM AT MCNELLIE'S SOUTH

**APRIL 10:** SAA COMMITTEE MEETING, 3:00 PM VIRTUAL MEETING

**APRIL 11:** EWI OF TULSA MONTHLY CHAPTER MEETING, CHECK-IN AT 5:30 PM,  
MEETING BEGINS AT 6:00 PM AT CABIN BOYS BREWERY

**APRIL 15:** MEMBERSHIP COMMITTEE MEETING, 10:30 AM VIRTUAL MEETING

**APRIL 24:** EWI OF TULSA MIDYEAR BOARD MEETING, 5:30 PM AT JODY DAVIS'  
HOME

# ANNOUNCEMENTS

## MARCH TO MEMBERSHIP

The "March to Membership" event, at President Jody Davis' home **will be postponed!** This is a recruitment event geared towards introducing potential new Member Firms to our organization and we need your help to identify companies or individuals you believe would be a good fit. Because we are a non-compete Chapter, respect our current Member Firms by not vetting or posting a potential competitor.

All standard processes will be followed before an invitation is sent to attend the event.

Submit all referrals to Shari Holdman at [sholdman@komen.org](mailto:sholdman@komen.org) and Aubry Oehlberg at [aohlberg@firststar-bank.com](mailto:aohlberg@firststar-bank.com).

Attached below is a form to assist you in the referral process and a full list of current Member Firms.

[Potential Members Worksheet](#)

[Current Member Firms](#)

## 2024 EMERGING EXECUTIVE WOMEN PROGRAM

The EWI Corporate Board is offering the Emerging Executive Women program again for 2024! Our own Connie Gibson, Food on the Move, was a recipient last year. The program is open and winners will be announced on Monday, April 15. The links to the program guidelines and the application are attached here.

[Program Guidelines](#)

[Emerging Executive Women Application](#)

# ANNOUNCEMENTS

## READING RALLY

If you are interested in serving on the Reading Rally Committee or want more info, please contact LaFonda Ehlers, our B/C/DP Director, at [lehlers@moorefuneral.com](mailto:lehlers@moorefuneral.com).

Click here for the [Reading Rally Amazon Wishlist](#).



## 2024-2025 BOARD SERVICE

This month the Nominating Committee will be sending out Straw Ballots for nominations to the 2024-2025 Tulsa Chapter Board of Directors. Please think about where your talents and skills could be used in leadership or who you think would be a great member of our Chapter Board of Directors!

# BIRTHDAYS & FIRM ANNIVERSARIES

## APRIL BIRTHDAYS

**April 3:** Mark Smith, Executive, Helmerich & Payne, Inc.

**April 9:** Chay Chinsethagid, Executive, Helmerich & Payne, Inc.

**April 8:** Jeannie Murphy, Representative, Grimsley Janitorial Supplies

**April 15:** Jamie Harris, Representative, Helmerich & Payne, Inc.

**April 15:** Sharon Keasler, Sustaining

**April 16:** Marie Stephens, Executive/Representative, Dare to Develop Industries

**April 17:** Madi Dyer, Executive/Representative, FranklinCovey

**April 18:** Kim Owens, Executive/Representative, The Bama Companies

**April 20:** Tonya Solomon, Representative, ARC Document Solutions

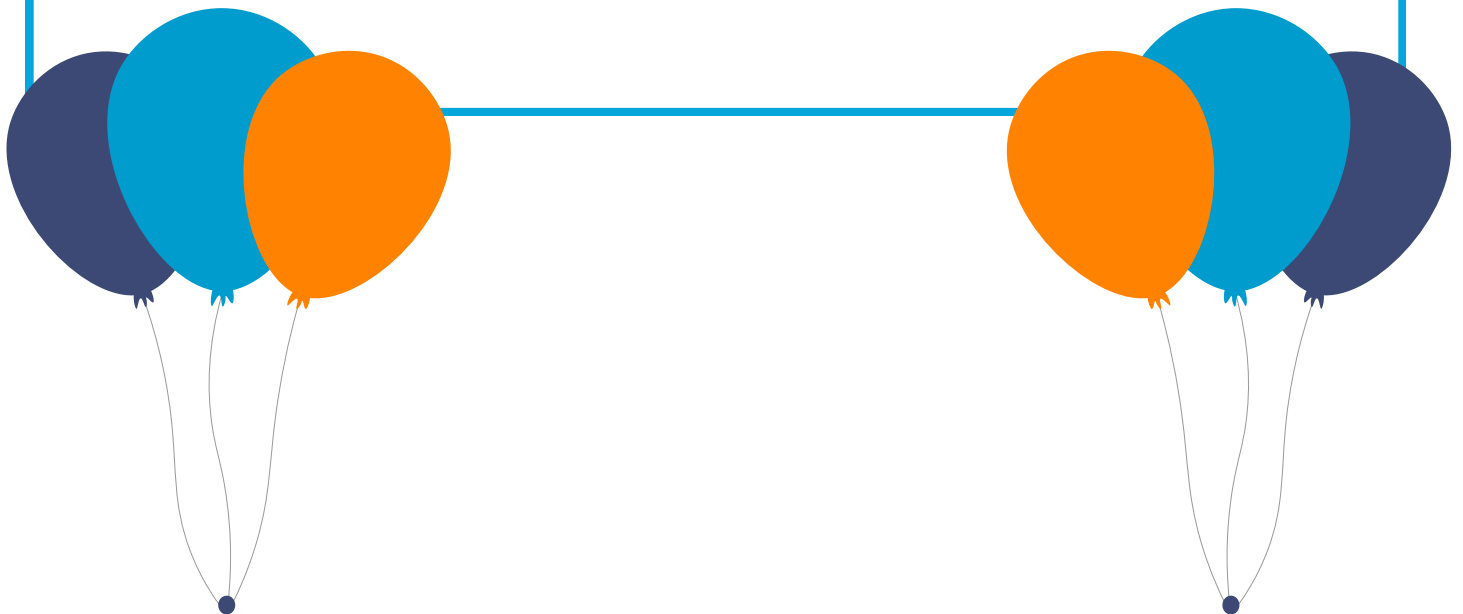
**April 20:** Teri Edmondson, Sustaining

**April 27:** Marilyn Cinocca, Sustaining

**April 29:** Reta Hallam-Jay, Representative, LDKerns Contractors

## APRIL ANNIVERSARIES

**April 1998:** Moore Funeral Homes



## INFORMATION



### DOOR PRIZES

Interested in donating a door prize for an upcoming meeting? Please contact Marnie Choisnard at [machoisnard@saintfrancis.com](mailto:machoisnard@saintfrancis.com). As always, we appreciate your generosity!



### MENTORS

Have questions about who your mentor is? Reach out to Aubry Oehlberg and she will help you out!  
[aohlberg@firststar-bank.com](mailto:aohlberg@firststar-bank.com)



### NEWS & PHOTOS

Want your news or photos in the next Connect? Email [peytonlshaffer@outlook.com](mailto:peytonlshaffer@outlook.com)



### LIFE EVENTS

If you are having any life events that you wish to share with the Chapter, please send them to Jessica Vagin at [Jessica.vagin@legendseniorliving.com](mailto:Jessica.vagin@legendseniorliving.com)  
We want to make sure the Chapter leadership and membership are kept informed of important happenings and are reaching out to support you! It is important to your Board of Directors that we celebrate your personal and professional accomplishments but also offer care and support in the event of surgery, illness or loss.

# CONTACT

## President

Jody Davis, Accent Moving, Storage & Logistics  
[jodydavis@accentmoving.com](mailto:jodydavis@accentmoving.com)  
918-671-5302

## Vice President

Susan Miller, Warren Professional Building Corp.  
[smiller@wpbctulsa.com](mailto:smiller@wpbctulsa.com)  
918-481-7953

## Secretary

Arquicia Franklin  
[arquicia@afacompany.com](mailto:arquicia@afacompany.com)  
918-691-7148

## Treasurer

Sara Shaklee, Trust Company of Oklahoma  
[sshaklee@trustok.com](mailto:sshaklee@trustok.com)  
918-899-2594

## Sergeant-at-Arms

Jessica Vagin, The Stonehaven  
[jessica.vagin@legendseniorliving.com](mailto:jessica.vagin@legendseniorliving.com)  
918-955-4149

## B/C/DP Director

Dr. LaFonda Ehlers, Moore Funeral Homes  
[lehlers@moorefuneral.com](mailto:lehlers@moorefuneral.com)  
918-744-1202

## Membership (Recruitment)

Shari Holdman, Susan G. Komen  
[sholdman@komen.org](mailto:sholdman@komen.org)  
918-728-0492

## Membership (Retention)

Aubry Oehlberg, Firststar Bank  
[aoehlberg@firststar-bank.com](mailto:aoehlberg@firststar-bank.com)  
918-853-2654

## Programs

Tinesa Siebert, The University of Oklahoma  
Foundation  
[tsiebert@ou.edu](mailto:tsiebert@ou.edu)  
918-645-3080

## Communications

Peyton Shaffer  
[peytonlshaffer@outlook.com](mailto:peytonlshaffer@outlook.com)  
918-520-1167

## Advisor

Janis Cohlma, Tropical Plant Design  
[janis@tropicalplantdesign.com](mailto:janis@tropicalplantdesign.com)  
918-622-3400

## Advisor

Tamara Conner, ONEOK, Inc.  
[tamara.conner@oneok.com](mailto:tamara.conner@oneok.com)  
918-588-7902

## Advisor

Judy Russell, ONEOK, Inc.  
[jrussell@oneok.com](mailto:jrussell@oneok.com)  
918-588-7931

## Advisor

Felicia Senter, Tulsa Tech  
[felicia.senter@tulsatech.edu](mailto:felicia.senter@tulsatech.edu)  
918-406-6106



**CONTACT US**

## ABOUT US

### OUR MISSION

EXECUTIVE WOMEN INTERNATIONAL (EWI) BRINGS TOGETHER KEY INDIVIDUALS FROM DIVERSE BUSINESSES FOR THE PURPOSE OF: PROMOTING MEMBER FIRMS, ENHANCING PERSONAL AND PROFESSIONAL DEVELOPMENT, AND ENCOURAGING COMMUNITY INVOLVEMENT.

### OUR VISION

TO ENHANCE PROFESSIONAL GROWTH AND DEVELOPMENT WITHIN A DIVERSE GROUP OF WOMEN WHILE EMPOWERING THEM TO MAKE A DIFFERENCE AS THEY INSPIRE OTHERS.

### OUR VALUES

INTEGRITY | EXCELLENCE | RESPECT | COLLABORATION

### EWI

EWI OF TULSA IS A CHAPTER OF EXECUTIVE WOMEN INTERNATIONAL ("EWI"). IF YOU WANT TO KNOW MORE ABOUT EWI INCLUDING THE MANY DEVELOPMENT OPPORTUNITIES OR CONNECT WITH MEMBERS IN OTHER CHAPTERS, PLEASE TAKE THE TIME TO REVIEW THE [EWI CORPORATE WEBSITE](http://WWW.EWITULSA.ORG).