

# Tulsa EwiConnect

CHARTERED 1956

FEBRUARY 2024

## LETTER FROM THE PRESIDENT

JODY DAVIS | ACCENT MOVING, STORAGE & LOGISTICS

What do you think of first when you hear "February"?

Most people automatically think of Valentine's Day, but there is so much more represented in February. There is President's Day. It is Black History Month. It is American Heart Month and National Cancer Prevention Month. Did you know it is also Humpback Whale Awareness Month? The Grand Finale for this year.....there is a February 29! It is a Leap Year.

National Wear Red Day is the first Friday in February. This year that will be February 2nd. Wear red on February 2nd to help raise awareness that heart disease is the leading cause of death in the U.S., and it is largely preventable. This is personal for many of us. I lost my father to heart disease 10 years ago, Sadly, it was possibly preventable if only he had addressed it sooner in life.

Who doesn't love Valentine's Day? If we are being honest, it is me who doesn't love it. But, I still do all things! I buy all the conversation hearts and even I wear pink & red. I also use it as an excuse to eat all the Reese's heart-shaped peanut butter cups! If you love Valentine's Day, you go girl!

At our meeting on February 8th (from 5:30 -6:00 pm), there will be a networking event with Secret Galentines. If you signed up to participate, do not forget to bring your gift for your Galentine. I regret that I will not be there to participate. We did this a couple of years ago, and it was great fun seeing what everyone received. I hope everyone enjoys getting better acquainted and meeting new people through this fun mixer.

On February 17, the Susan G. Komen 2024 Pink Stiletto Gala will take place at River Spirit Casino and Resort. Shari Holdman, Exec/Rep, is the Executive Director for Susan G. Komen in our area. Each one of us has been impacted by cancer, either directly or through family and/or friends. As many of you know, I lost my Mom to breast cancer 20 years ago. That loss puts a different perspective on National Cancer Prevention Month and staying vigilant by doing all the things that protect our health.

## 2023-2024 OFFICERS & DIRECTORS

### PRESIDENT

JODY DAVIS ACCENT MOVING, STORAGE & LOGISTICS

### VICE PRESIDENT

SUSAN MILLER WARREN PROFESSIONAL BUILDING CORP.

### SECRETARY

ARQUICIA FRANKLIN

### TREASURER

SARA SHAKLEE TRUST COMPANY OF OKLAHOMA

### SERGEANT-AT-ARMS

JESSICA VAGIN THE STONEHAVEN

### B/C/DP DIRECTOR

DR. LAFONDA EHLERS MOORE FUNERAL HOMES

### MEMBERSHIP (RECRUITMENT)

SHARI HOLDMAN SUSAN G. KOMEN

### MEMBERSHIP (RETENTION)

AUBRY OEHLBERG FIRSTAR BANK

### PROGRAMS

TINESA SIEBERT THE UNIVERSITY OF OKLAHOMA FOUNDATION

### COMMUNICATIONS

PEYTON SHAFFER

### ADVISOR

TAMARA CONNER ONEOK, INC.

### ADVISOR

FELICIA SENTER TULSA TECH

### ADVISOR

JUDY RUSSELL ONEOK, INC.

### ADVISOR

JANIS COHLMIA TROPICAL PLANT DESIGN

# Tulsa ewiConnect

CHARTERED 1956

FEBRUARY 2024

## LETTER FROM THE PRESIDENT CONTINUED

JODY DAVIS | ACCENT MOVING, STORAGE & LOGISTICS

February is Black History Month. Continued education, learning, and conversations are vital to ensure history does not repeat itself. I have asked a couple of our Representatives to tell us what Black History Month means to them. Be sure to read their contributions in a dedicated section of the Connect. I appreciate those who took the time to share with all of us. *For Such a Time as This!*

President's Day is the 19th. The holiday was established in 1885 to honor President George Washington. His actual birthday was February 22, 1732. This would be his 282nd birthday! This holiday has evolved from celebrating Presidents Washington and later President Lincoln to celebrating all of our U.S. Presidents.

2024 is a Leap Year! What will you do with one more day this month? Twenty-four more hours! How often do we say: "There's just not enough time in the day." -or- "If I had just one more hour today." Make the most of that extra day!

Fun fact, According to The Honor Society of Leap Year Day Babies, around 5 million people share this birthday. Those born on February 29 are called "leaplings". Be sure to wish any "leaplings" you may know a Happy Birthday.

February is a short but clearly powerful month. The underlying heart of February is love. Love one another. Love yourself. *For Such A Time As This.*

Jody

Tulsa Chapter President 2023-2024

*For Such  
A Time  
As This*



### 2023-2024 OFFICERS & DIRECTORS

**PRESIDENT**

JODY DAVIS ACCENT MOVING, STORAGE & LOGISTICS

**VICE PRESIDENT**

SUSAN MILLER WARREN PROFESSIONAL BUILDING CORP.

**SECRETARY**

ARQUICIA FRANKLIN

**TREASURER**

SARA SHAKLEE TRUST COMPANY OF OKLAHOMA

**SERGEANT-AT-ARMS**

JESSICA VAGIN THE STONEHAVEN

**B/C/DP DIRECTOR**

DR. LAFONDA EHLERS MOORE FUNERAL HOMES

**MEMBERSHIP (RECRUITMENT)**

SHARI HOLDMAN SUSAN G. KOMEN

**MEMBERSHIP (RETENTION)**

AUBRY OEHLBERG FIRSTAR BANK

**PROGRAMS**

TINESA SIEBERT THE UNIVERSITY OF OKLAHOMA FOUNDATION

**COMMUNICATIONS**

PEYTON SHAFFER

**ADVISOR**

TAMARA CONNER ONEOK, INC.

**ADVISOR**

FELICIA SENTER TULSA TECH

**ADVISOR**

JUDY RUSSELL ONEOK, INC.

**ADVISOR**

JANIS COHLMIA TROPICAL PLANT DESIGN

# Tulsa ewiConnect

## IN THIS ISSUE

- [President's Letter](#)
- [Monthly Chapter Meeting](#)
- [January Chapter Meeting Highlights](#)
- [EWI After-Hours](#)
- [Thank You](#)
- [January Meeting Feedback](#)
- [Black History Month: HERstory](#)
- [Calendar of Events](#)
- [Events to Attend](#)
- [Announcements](#)
- [Executive Breakfast 2024](#)
- [February Birthdays and Firm Anniversaries](#)
- [Information](#)
- [Contact](#)
- [About Us](#)



<https://www.facebook.com/ewitulsa/>



<https://www.linkedin.com/in/ewi-tulsa-1596791b9/>



<https://www.instagram.com/ewitulsa/>



[https://twitter.com/EWI\\_Tulsa](https://twitter.com/EWI_Tulsa)

# MONTHLY CHAPTER MEETING



## FEBRUARY CHAPTER MEETING

### Join Us!

Please join us for an informative presentation from Dr. Emily Mortimer, VP of Ecosystems, Tulsa Regional Stem Alliance (TRSA), about the Tulsa STEM (Science, Technology, Engineering, and Mathematics) program. What it is and why it is so fundamental.

**Theme:** All You Need is LOVE! Wear RED to support American Heart Month  
**Date:** Thursday, February 8, 2024  
**Time:** 5:30 PM Social/Secret Galentines Exchange | 6:00 PM Meeting  
**Location:** Tandy YMCA (Community Room)-5005 S. Darlington Avenue  
**Parking:** Free parking available at the meeting location  
**Cost:** \$45 Members & Guests | \$30 Sustaining

Please [click here](#) to connect to the RSVP form.

- RSVP by Wednesday, January 31 so that we may provide the appropriate seating arrangements and dinner servings.
- Please let us know if you have any dietary restrictions.
- No RSVPs and no-shows to meetings will be invoiced! Business Meeting fees are mandatory for all members. While you will be invoiced regardless of attendance, please take the time to RSVP.
- **Note: No alcohol permitted at venue.**

Do you have a door prize you wish to donate? If so, please contact Marnie Choisnard at [machoisnard@saintfrancis.com](mailto:machoisnard@saintfrancis.com). As always, we appreciate your generosity!

# Secret Valentines

Secret Galentines will be exchanged during the social portion of our meeting (5:30 - 6:00 PM)! If you are not able to make it, but planned on participating, please reach out to Tinesa Siebert at [tsiebert@ou.edu](mailto:tsiebert@ou.edu).

# JANUARY CHAPTER MEETING HIGHLIGHTS



Sarah Bowen, Tulsa Zoo & Jessica Vagin, The Stonehaven



President, Jody Davis, Accent Moving, Storage & Logistics & Speaker, Dannelle Newman, Helmerich & Paynce, Inc.



Roberta Montgomery, Trish Richey, Heather Stephen, & Speaker, Dannelle Newman, Helmerich & Payne, Inc.



Judy Russell, ONEOK, Inc. & Sheila Sayne, Attorney at Law

# JANUARY CHAPTER MEETING HIGHLIGHTS



Jessica Vagin, The Stonehaven; Jennifer Young, Arvest Bank; & Tinesa Siebert, The University of Oklahoma Foundation

Speaker, Dannelle Newman, Helmerich & Payne, Inc.



## SPEAKER RECAP:

I find it to be incredibly inspiring and valuable to hear other people’s journeys and benefit from the hard-earned lessons in life that they have learned. I’m a HUGE fan of learning from other people’s experiences. Considering that, I want to share some of the things I’ve learned on my journey about “the power of forward motion” and how it relates to us as women and as professionals.

I am what I jokingly like to call a “recovering therapist”, and I currently work at Helmerich & Payne, and I get to work with teams, the executive leaders, and individuals all throughout the organization.

I love my job, but I didn’t start out in the corporate world at all, and in fact, like many of you, I’ve had some twists and turns getting here. [Click here to continue reading.](#)

# EWI AFTER-HOURS



Arquicia Franklin; Amy Henderson, Tulsa Oilers; Susan Miller, Warren Professional Building Corp.; & Connie Gibson, Food on the Move



Felicia Senter, Tulsa Tech; Jessica Barlow-Schmidt, Connie Saunders, Burnett Home Improvement; President, Jody Davis, Accent Moving, Storage & Logistics; Aubry Oehlberg, Firststar Bank; & Kim Owens, The Bama Companies.



Felicia Senter, Tulsa Tech; Lori Heerlyn, Kim Bowman, T.D. Williamson; Judy Russell, ONEOK Inc.; Tonya Solomon ARC Document Solutions



# THANK YOU!

What a great meeting to kick off 2024!

We started the evening with a terrific New Member Orientation, prior to our Chapter Meeting. It was hosted by our Membership Recruitment Director, Shari Holdman representing Susan G. Komen and Membership Retention Director, Aubry Oehlberg representing Firststar Bank. We had both new and seasoned ladies join for a presentation on the Tulsa Chapter. It was full of great questions and conversation. Thank you to all who attended.

Dannelle Newman was such an empowering speaker. She really sent us out ready to take on the new year. Our meeting survey truly reflects the voice of our members and how much they valued the speaker. Thank you to Trish Richey, representing Helmerich & Payne, for suggesting Dannelle's presentation

Tinesa Siebert, representing the University of Oklahoma Foundation, serves as our Program Director. She and her committee did an outstanding job.

Susan Miller, representing Warren Professional Building Corp., and serving as our Chapter Vice President, hosted our meeting at the Arkema building, part of their portfolio of properties.

The New Year's Toast was sponsored by Accent Moving, Storage & Logistics, Inc./Mayflower.

Kim Owens, representing Bama Companies, is serving as our Chapter Chaplain. Kim gave a lovely inspiration and invocation.

The door prizes are always exceptional and truly appreciated. We appreciate the following for making donations:

Eva Blair, T.C. Blair & Associates

Marnie Choisnard, Health Zone at Saint Francis

Amy Henderson, The Tulsa Oilers

Jan Ehrle, Mid America Land Grain and Cattle

Jessica Vagin, representing The Stonehaven, serves as our Sargeant-at-Arms. She and her Hospitality Team do an excellent job of welcoming everyone at each meeting.

Thank you all for your continued support and contributions to help make our monthly chapter meetings a success.

If you are looking for a place to plug in and serve, please do not hesitate to reach out to me:

[jodydavis@accentmoving.com](mailto:jodydavis@accentmoving.com)





# JANUARY MEETING FEEDBACK

## THE MEAL

- Very tasty!
- Yummy! Nice and healthy.
- Wonderful flavor and there was plenty of food for the group.
- Dinner was delicious!
- Prompt and delicious.
- Would have preferred a beef option as well.
- Chicken and salad was delicious. Rice was not so good.

## THE PRESENTATION

- Dannelle was AMAZING! It would seem she spoke directly to me and the situation I am currently facing. We need a Dannelle Part 2!!!
- I really appreciated Dannelle and the topic she covered. I'd be delighted to witness more speakers and topics similar to hers.
- Great speaker, with a great topic for the start of the new year. I also really liked the toast at the beginning. Overall, it was a great meeting!
- Loved Dannelle! It was very motivating. Also, liked the toast.
- Dannelle's life story is uplifting and encouraging. It is a reminder that we need to encourage one another.
- Great job! The speaker was great and the topic was relevant and motivating. Would enjoy more from her. Programs' gift exchange is a very nice idea as well.
- Would love to have her again.
- I would love more meetings like this!
- Dannelle was relatable and motivational
- Really enjoyed Danielle's talk with us. Her words definitely resonated with me and I definitely feel I learned a lot in a short amount of time.
- I would like more information on purchasing Dannelle's book.
- Would LOVE to have Dannelle come back again!
- Loved the 4-top tables which allowed better visiting opportunities.

# BLACK HISTORY MONTH: HERstory



## FELICIA SENTER TULSA TECH

Black History Month is a special time of remembrance, reflection, and pride. Remembering those unsung pioneers that paved the way for me to break through the glass ceiling. Reflecting on ways to leave a legacy for my children, grandchildren and little brown girls that look up to me. Proud to honor the past, the present and the future.

February is Black History Month for some, it is a way of life for others. Thankful and Blessed to live in a world where our history is taught and displayed.

## ARQUICIA FRANKLIN

Black History Month means to me: freedom. It's the freedom to honor and remember the significant contributions of ancestors and their impact globally. Moreover, it acknowledges the importance of being aware of and actively participating in the ongoing history being made by current generations. Thankful for the Freedom to Love, Lead, and Inspire!



# BLACK HISTORY MONTH:HERstory



## PHYLLIS RIVERS FLINTCO, LLC

What Black History Month Means to Me.

To me, February is the month that we look back at history and see how far we (Blacks) have come. Also, to teach others the struggles that we have had to overcome. But have we?

I often wonder the jobs that I have had over the years. Did I get them on MY merit or did I get them to fill a quota? I'm hoping it was my merit, my knowledge, and my personality. I have experienced racism on many occasions and wondered why this happened to me. I was dressed nice. I didn't think I looked like a thief. I don't talk loud or inappropriately. I had the same color money as the lady behind me that someone waited on first. It has been over 150 years since slavery ended in the United States. Since then, there have been many people leading the movements and overcoming adversities to continue the fight against racism. While there has been much progress in the way of civil rights, equal opportunity, and reduced discrimination, there is still a lot to be done.

Every month is Black History Month for me.



# CALENDAR OF EVENTS



## FEBRUARY

**FEBRUARY 7:** SAA COMMITTEE MEETING, 3:00 PM VIRTUAL MEETING

**FEBRUARY 8:** EWI OF TULSA MONTHLY CHAPTER MEETING, CHECK-IN AT 5:30 PM, MEETING BEGINS AT 6:00 PM AT TANDY YMCA

**FEBRUARY 14:** B/C/DP COMMITTEE MEETING, 11:30 AM VIRTUAL MEETING

**FEBRUARY 19:** MEMBERSHIP COMMITTEE MEETING, 10:30 AM VIRTUAL MEETING

**FEBRUARY 21:** PROGRAMS COMMITTEE MEETING, 11:30 AM AT OU TULSA

**FEBRUARY 28:** EWI OF TULSA BOARD MEETING, NOON AT TULSA TECH LEMLEY CAMPUS

## EVENTS TO ATTEND

### EWI OF OKC CASINO NIGHT

WHERE: The Clark (16 NE 2nd St. Oklahoma City)

WHEN: February 13, 2024, 6:00 – 8:00 PM

WHAT: On Tuesday, February 13th, EWI is hosting a Casino Night– to bring awareness to their organization and support their educational initiatives. This event will include casino games, a silent auction, and raffle items.

[Click here](#) for more information and to register. Guest Tickets \$65

### 2024 PINK STILETTO GALA

WHERE: River Spirit Casino Resort (8330 Riverside Parkway, Tulsa)

WHEN: February 17, 2024, from 6:00 – 9:00 PM

WHAT: An event to honor local women who have used their platforms to promote breast cancer awareness

For more info reach out to Shari Holdman [sholdman@komen.org](mailto:sholdman@komen.org) or Tamara Conner, who is Chairing the event, at [tamara.conner@oneok.com](mailto:tamara.conner@oneok.com).

# ANNOUNCEMENTS



## MARCH TO MEMBERSHIP

EWI of Tulsa is preparing to host a “March to Membership” event. This is a recruitment event geared towards introducing potential new Member Firms to our organization and we need your help to identify companies or individuals you believe would be a good fit.

Because we are a non-compete chapter, respect our current Member Firms by not vetting or posting a potential competitor. All standard processes will be followed before an invitation is sent to attend the event.

February 9 is the deadline to submit all referrals to Shari Holdman at [sholdman@komen.org](mailto:sholdman@komen.org) and Aubry Oehlberg at [aohlberg@firststar-bank.com](mailto:aohlberg@firststar-bank.com).

Attached below is a form to assist you in the referral process and a full list of current Member Firms.

[Potential Members Worksheet](#)

[Current Member Firms](#)

## 2024 EMERGING EXECUTIVE WOMEN PROGRAM

The EWI Corporate Board is offering the Emerging Executive Women program again for 2024! Our own Connie Gibson, Food on the Move, was a recipient last year. The program is open and winners will be announced on Monday, April 15. The links to the program guidelines and the application are attached here.



[Program Guidelines](#)

[Emerging Executive Women Application](#)

# ANNOUNCEMENTS



## READING RALLY

If you are interested in serving on the Reading Rally Committee or want more info, please contact LaFonda Ehlers, our B/C/DP Director at [lehlers@moorefuneral.com](mailto:lehlers@moorefuneral.com).

Click here for the [Reading Rally Amazon Wishlist](#).

## ASIST

The Executive Women International Adult Students in Scholastic Transition (ASIST) Scholarship Program for the benefit of non-traditional students is accepting applications. EWI of Tulsa will award six scholarships in the amount of \$2000 each. Deadline: Friday, March 25, 2024 at 11:59 PM CT.



<https://apply.mykaleidoscope.com/scholarship/asist2024>

# EXECUTIVE BREAKFAST 2024

*EWI of Tulsa*  
**EXECUTIVE BREAKFAST**  
Connections | Careers | Community



<b>CEDAR RIDGE COUNTRY CLUB</b> 10302 S GARNETT RD, BROKEN ARROW, OK 74011	MARCH <b>5</b> 2024
<b>7:30 AM</b>	

**Save the Date: EWI of Tulsa's Executive Breakfast**

**Formal invitations will be sent out to all Executives and Executive/Representatives soon, please watch for these to arrive.**

**RSVP to Susan Miller at [smiller@wpbctulsa.com](mailto:smiller@wpbctulsa.com)**



# BIRTHDAYS & FIRM ANNIVERSARIES

## FEBRUARY BIRTHDAYS

**February 2:** Gretchen Mowry, Representative, Arrowhead Consulting

**February 8:** Osha Thompson, Representative, T.D. Williamson

**February 9:** Trelle Beck, Representative, Schnake Turnbo Frank

**February 13:** Diane Jarvi, Sustaining

**February 16:** Glenda Stoner, Sustaining

**February 23:** Debbie Stumps, Representative, Purview Life

**February 25:** Alex Eaton, Executive, World Travel Service, LLC

**February 25:** Suzanne McLaughlin, Representative, Allied Universal Security Services

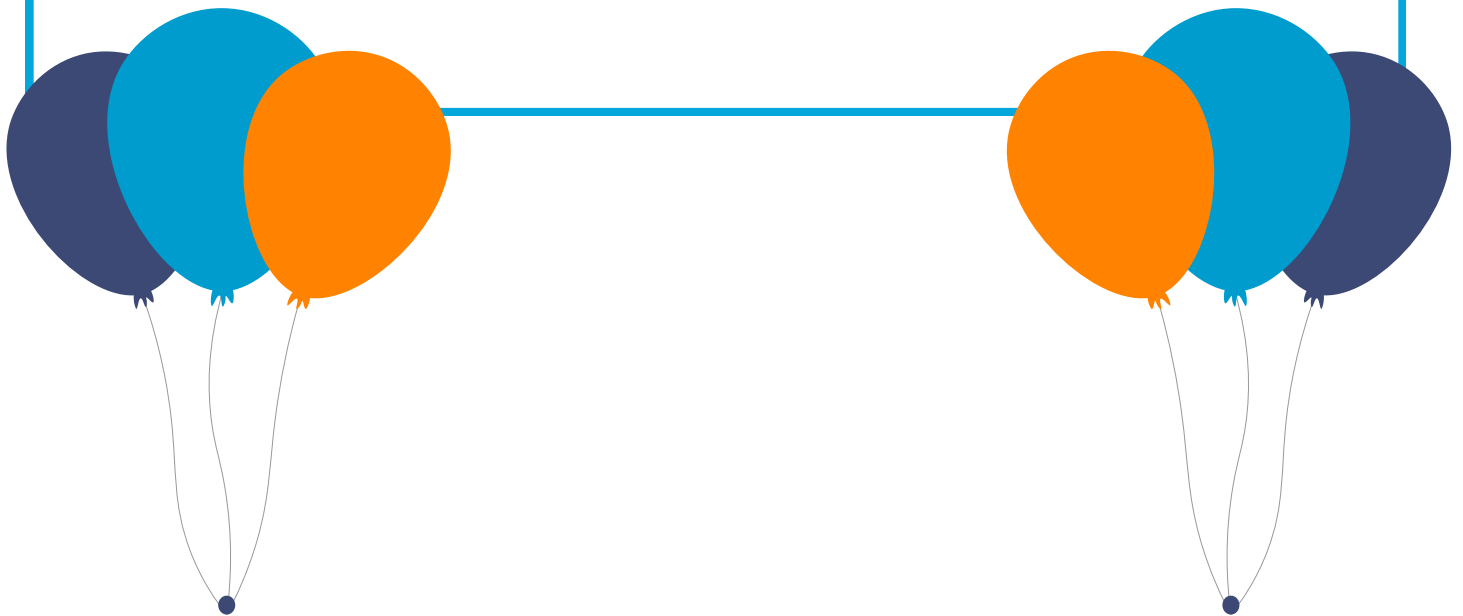
## FEBRUARY ANNIVERSARIES

**February 1986:** Mid-America Land, Grain & Cattle Co., Inc.

**February 2014:** Arvest Bank

**February 2018:** Coldwell Banker Select

**February 2023:** Anchor Search & Consulting



## INFORMATION



### DOOR PRIZES

Interested in donating a door prize for an upcoming meeting? Please contact Marnie Choisnard at [machoisnard@saintfrancis.com](mailto:machoisnard@saintfrancis.com). As always, we appreciate your generosity!



### MENTORS

Have questions about who your mentor is? Reach out to Aubry Oehlberg and she will help you out! [aohlberg@firststar-bank.com](mailto:aohlberg@firststar-bank.com)



### NEWS & PHOTOS

Want your news or photos in the next Connect? Email [peytonlshaffer@outlook.com](mailto:peytonlshaffer@outlook.com)



### LIFE EVENTS

If you are having any life events that you wish to share with the Chapter, please send them to Jessica Vagin at [Jessica.vagin@legendseniorliving.com](mailto:Jessica.vagin@legendseniorliving.com). We want to make sure the Chapter leadership and membership are kept informed of important happenings and are reaching out to support you! It is important to your Board of Directors that we celebrate your personal and professional accomplishments but also offer care and support in the event of surgery, illness or loss.

# CONTACT

## President

Jody Davis, Accent Moving, Storage & Logistics  
[jodydavis@accentmoving.com](mailto:jodydavis@accentmoving.com)  
918-671-5302

## Vice President

Susan Miller, Warren Professional Building Corp.  
[smiller@wpbctulsa.com](mailto:smiller@wpbctulsa.com)  
918-481-7953

## Secretary

Arquicia Franklin  
[arquicia@afacompany.com](mailto:arquicia@afacompany.com)  
918-691-7148

## Treasurer

Sara Shaklee, Trust Company of Oklahoma  
[sshaklee@trustok.com](mailto:sshaklee@trustok.com)  
918-899-2594

## Sergeant-at-Arms

Jessica Vagin, The Stonehaven  
[jessica.vagin@legendseniorliving.com](mailto:jessica.vagin@legendseniorliving.com)  
918-955-4149

## B/C/DP Director

Dr. LaFonda Ehlers, Moore Funeral Homes  
[lehlers@moorefuneral.com](mailto:lehlers@moorefuneral.com)  
918-744-1202

## Membership (Recruitment)

Shari Holdman, Susan G. Komen  
[sholdman@komen.org](mailto:sholdman@komen.org)  
918-728-0492

## Membership (Retention)

Aubry Oehlberg, Firststar Bank  
[aoehlberg@firststar-bank.com](mailto:aoehlberg@firststar-bank.com)  
918-853-2654

## Programs

Tinesa Siebert, The University of Oklahoma  
Foundation  
[tsiebert@ou.edu](mailto:tsiebert@ou.edu)  
918-645-3080

## Communications

Peyton Shaffer  
[peytonlshaffer@outlook.com](mailto:peytonlshaffer@outlook.com)  
918-520-1167

## Advisor

Janis Cohlma, Tropical Plant Design  
[janis@tropicalplantdesign.com](mailto:janis@tropicalplantdesign.com)  
918-622-3400

## Advisor

Tamara Conner, ONEOK, Inc.  
[tamara.conner@oneok.com](mailto:tamara.conner@oneok.com)  
918-588-7902

## Advisor

Judy Russell, ONEOK, Inc.  
[jrussell@oneok.com](mailto:jrussell@oneok.com)  
918-588-7931

## Advisor

Felicia Senter, Tulsa Tech  
[felicia.senter@tulsatech.edu](mailto:felicia.senter@tulsatech.edu)  
918-406-6106



**CONTACT US**

## ABOUT US

### OUR MISSION

EXECUTIVE WOMEN INTERNATIONAL (EWI) BRINGS TOGETHER KEY INDIVIDUALS FROM DIVERSE BUSINESSES FOR THE PURPOSE OF: PROMOTING MEMBER FIRMS, ENHANCING PERSONAL AND PROFESSIONAL DEVELOPMENT, AND ENCOURAGING COMMUNITY INVOLVEMENT.

### OUR VISION

TO ENHANCE PROFESSIONAL GROWTH AND DEVELOPMENT WITHIN A DIVERSE GROUP OF WOMEN WHILE EMPOWERING THEM TO MAKE A DIFFERENCE AS THEY INSPIRE OTHERS.

### OUR VALUES

INTEGRITY | EXCELLENCE | RESPECT | COLLABORATION

### EWI

EWI OF TULSA IS A CHAPTER OF EXECUTIVE WOMEN INTERNATIONAL ("EWI"). IF YOU WANT TO KNOW MORE ABOUT EWI INCLUDING THE MANY DEVELOPMENT OPPORTUNITIES OR CONNECT WITH MEMBERS IN OTHER CHAPTERS, PLEASE TAKE THE TIME TO REVIEW THE [EWI CORPORATE WEBSITE](http://WWW.EWITULSA.ORG).