

# Tulsa EWI Connect

CHARTERED 1956

JANUARY 2024

## LETTER FROM THE PRESIDENT

JODY DAVIS | ACCENT MOVING, STORAGE & LOGISTICS

As we flipped to the clean page at midnight and awoke to that fresh New Year of 2024, did you set any New Year's Resolutions? I am not someone who declares New Year's Resolutions—well, except one—Do Not Set New Year's Resolutions!

I spent New Year's Eve in a castle, in Jamestown, NC, celebrating the marriage of my nephew and his new bride. What a fabulous way to ring in 2024! Surrounded by most of my immediate family, we ripped the December 2023 page off the calendar and toasted to not only young love but to a whole year that we have in front of us.

I would be remiss if I did not take a moment to reflect on 2023—I knew the year would bring me my first grandson, Creed August Watson, and that was enough for me to call it a good year. If I am being honest, it was also filled with some high highs and some low lows. And it brought unexpected opportunities, like becoming the Tulsa Chapter President. I totally did not see that one coming.

What a great couple of months we have had in the Tulsa Chapter. Your support of this new Board has been outstanding and sincerely appreciated. Even though the calendar year just ended, the EWI year is just getting started! I hope your 2024 EWI New Year's Resolution is to find your **"For Such A Time As This"**. Resolve to get involved, to recruit new members, to attend meetings, to go deeper with your EWI commitment. I can promise you this, it will be the easiest resolution to keep and one with great rewards and benefits for each one of us and for our Chapter.

Cheers to 2024!

Jody

Tulsa Chapter President 2023-2024

For Such  
A Time  
As This



## 2023-2024 OFFICERS & DIRECTORS

### PRESIDENT

JODY DAVIS | ACCENT MOVING, STORAGE & LOGISTICS

### VICE PRESIDENT

SUSAN MILLER | WARREN PROFESSIONAL BUILDING CORP.

### SECRETARY

ARQUICIA FRANKLIN | GET BEYOND

### TREASURER

SARA SHAKLEE TRUST COMPANY OF OKLAHOMA

### SERGEANT-AT-ARMS

JESSICA VAGIN | THE STONEHAVEN

### B/C/DP DIRECTOR

DR. LAFONDA EHLERS | MOORE FUNERAL HOMES

### MEMBERSHIP (RECRUITMENT)

SHARI HOLDMAN | SUSAN G. KOMEN

### MEMBERSHIP (RETENTION)

AUBRY OEHLBERG | FIRSTSTAR BANK

### PROGRAMS

TINESA SIEBERT | THE UNIVERSITY OF OKLAHOMA FOUNDATION

### COMMUNICATIONS

PEYTON SHAFFER | POLSTON TAX

### ADVISOR

TAMARA CONNER | ONEOK, INC.

### ADVISOR

FELICIA SENTER | TULSA TECH

### ADVISOR

JUDY RUSSELL | ONEOK, INC.

### ADVISOR

JANIS COHLMIA | TROPICAL PLANT DESIGN

# Tulsa ewiConnect

## IN THIS ISSUE

- **President's Letter**
- **Monthly Chapter Meeting**
- **December Chapter Meeting Highlights**
- **Thank You**
- **December Meeting Feedback**
- **Member Spotlights**
- **In Memory**
- **Calendar of Events**
- **Events to Attend**
- **Announcements**
- **January Birthdays and Firm Anniversaries**
- **Information**
- **Contact**
- **About Us**



<https://www.facebook.com/ewitulsa/>



<https://www.linkedin.com/in/ewi-tulsa-1596791b9/>



<https://www.instagram.com/ewitulsa/>



[https://twitter.com/EWI\\_Tulsa](https://twitter.com/EWI_Tulsa)

# MONTHLY CHAPTER MEETING

## JANUARY CHAPTER MEETING

HAPPY  
NEW  
YEAR

### Join Us!

Please join us to hear Dannelle Newman from Helmerich & Payne speak on "The Power of Forward Motion". Dannelle Newnam is an executive coach and a "recovering therapist" who now works in the organizational development department at Helmerich & Payne.

**Theme:** New Year 2024!

**Date:** Thursday, January 11, 2024

**Time:** 5:30 PM Social | 6:00 PM Meeting

**Location:** Arkema - 6502 South Yale Ave Tulsa, OK 74136

**Parking:** Free parking available at the meeting location

**Cost:** \$45 Members & Guests | \$30 Sustaining

Please [click here](#) to connect to the RSVP form.

- RSVP by Friday, January 5th so that we may provide the appropriate seating arrangements and dinner servings.
- Please let us know if you have any dietary restrictions.
- No RSVPs and no-shows to meetings will be invoiced! Business Meeting fees are mandatory for all members. While you will be invoiced regardless of attendance, please take the time to RSVP.

Do you have a door prize you wish to donate? If so, please contact Marnie Choisnard at [machoisnard@saintfrancis.com](mailto:machoisnard@saintfrancis.com). As always, we appreciate your generosity!

# Secret Valentines

February's Chapter Meeting will include Secret Valentine's for those who want to participate! We will be drawing names at the January Chapter Meeting. If you are unable to attend the January meeting but would like to participate in the Secret Valentine exchange at the February meeting, [click here for the form](#).

# DECEMBER CHAPTER MEETING HIGHLIGHTS



Trish Richey, Helmerich & Payne, Inc.; Felicia Senter, Tulsa Tech; Reta Jay, LDKerns Contractors



Jessica Vagin, The Stonehaven; Brianna Root, Tulsa Drillers; Elizabeth Iobst, Helton Law Firm



Teri Edmondson, Sustaining; Tonya Solomon, ARC Document Solutions; Eva Blair, TC Blair & Associates; Phyllis Rivers, Flintco



Jeannie Murphy-Drake, Grimsley Janitorial Supplies & The Grinch

# DECEMBER CHAPTER MEETING HIGHLIGHTS



Colleen Farris, Moody's Jewelry & Vicki Dietz, Amazon Services



Trish Richey, Roberta Montgomery, Heather Stephen, & Jamie Harris, Helmerich & Payne, Inc.



Jessica Vagin, The Stonehaven; Peyton Shaffer, Polston Tax; Sarah Bowen, Tulsa Zoo; Elizabeth Iobst, Helton Law Firm; Aubry Oehlberg, Firstar Bank



Lori Heerlyn, T.D. Williamson & Dr. LaFonda Ehlers, Moore Funeral Homes

# DECEMBER CHAPTER MEETING HIGHLIGHTS



Jan Ehrle, Mid-America Land, Grain & Cattle Co., Inc.; Osha Thompson, T.D. Williamson; President, Jody Davis, Accent Moving, Storage & Logistics



Connie Gibson, Food on the Move; Madi Dyer, FranklinCovey; Evon Markum, Kendall Whittier Main Street



Susan Miller, Warren Professional Building Corp.; Rita Young, Sustaining; Teri Edmondson, Sustaining; & Gloria McQuade, Burnett Home Improvement



Lisa Stansill, Sustaining & Jessica Vagin, The Stonehaven

# THANK YOU!

A sincere THANK YOU to all who contributed to the December Meeting!

Chris Swart, Coldwell Banker, for securing our beautiful meeting location.

Tinesa Siebert, The University of Oklahoma Foundation, Program Director and the Committee.

Trish Richey, Helmrich & Payne, Bylaws and Standing Rules & Procedures Chair and Committee:

- Past Chapter Presidents
- Marie Stephens, Dare to Develop
- Gretchen Mowry, Arrowhead Consulting
- Susan Miller, Warren Professional Building Corporation, Chapter Vice President
- Jody Davis, Accent Moving, Storage & Logistics/Mayflower, Chapter President

Reta Jay, LD Kerns, Strategic Plan Chair and Committee:

- Past Chapter Presidents
- Sarah Bowen, Tulsa Zoo
- Kelli Gernandt, Trust Company of Oklahoma
- Phyllis Rivers, Flintco.
- Susan Miller, Warren Professional Building Corporation, Chapter Vice President
- Jody Davis, Accent Moving, Storage & Logistics/Mayflower, Chapter President

Peyton Shaffer, Polston Tax, our Grinch.

Door Prize Contributions were made by:

- Eva Blair, TC Blair & Associates
- Jennifer Young, Arvest Bank
- Evon Markum, Transitional Member
- Colleen Farris, Moody's Jewelry
- Jody Davis, Accent Moving, Storage & Logistics/Mayflower



# DECEMBER MEETING FEEDBACK

## THE MEAL

- The food was amazing! I would love to get catering from Bird and Bottle again!
- DELICIOUS! Enjoyed getting to take some for lunch :)
- I especially loved the short rib and risotto!
- The rolls were a bit dry because they weren't covered. But tasted great!
- Outstanding!
- Delicious
- It was nice to have to-go boxes available!

## THE VENUE

- Loved the venue.
- Good space with a pretty view
- This venue was wonderful for our group size, the set up was beautiful and the location was perfect!

## THE PRESENTATION

- I loved the Grinch and seeing all the holiday sweaters
- I liked the ice breaker!
- Loved the positivity!
- It was a fun meeting. Laughs, quick and informative.
- Great business meeting and good preparation and presentation of the items discussed.
- Business meeting went well!
- The grinch was adorable!
- It was enjoyable to see everyone's attire and to hear their respective favorite movie and song!
- Loved the introductions



# MEMBER SPOTLIGHTS



## WELCOME BACK OSHA THOMPSON T.D. WILLIAMSON

Osha joined T.D. Williamson this year as Executive Administrative Assistant. She has enjoyed her roles during her career in Human Resources and Office Administration. The industries Osha has worked in are Hospitality/Entertainment/Casino Administration in Tribal Gaming, Healthcare and Construction. She is also a United States Air Force Veteran. Osha has been described as gracious and kind. She believes in the power of work-life balance and enjoys sharing tips for achieving it, by building trust, growing, and cultivating relationships, and ensuring people feel valued. "Life is a garden and requires purposeful attention." Outside the office, you will often find Osha connecting with her creative side indulging in artistic adventures, treasure hunting, and advocating tranquility. She enjoys spending time with her husband, three daughters, and two grandsons.

## WELCOME STEFANIE PHARISS 1907 PRODUCTIONS

Stefanie started her career with a B.A. in Theater Performance, which led to her working in every role imaginable in theater, such as stage managing and directing. Stefanie spent the early part of her career working in Los Angeles in television and film production.

Stefanie also has more than 20 years of experience in sales, marketing, and business development. She is passionate about delivering the best possible results for her clients and making sure every tiny detail is executed perfectly. Working at 1907 Productions combines her love for business development with the creativity and excitement of event production. Stefanie's happy place is the beach, and when she can't get there, you will find her by the pool reading a book.



## MEMBER SPOTLIGHTS



### CONNIE GIBSON, FOOD ON THE MOVE EWI CORPORATE SCHOLARSHIP RECIPIENT

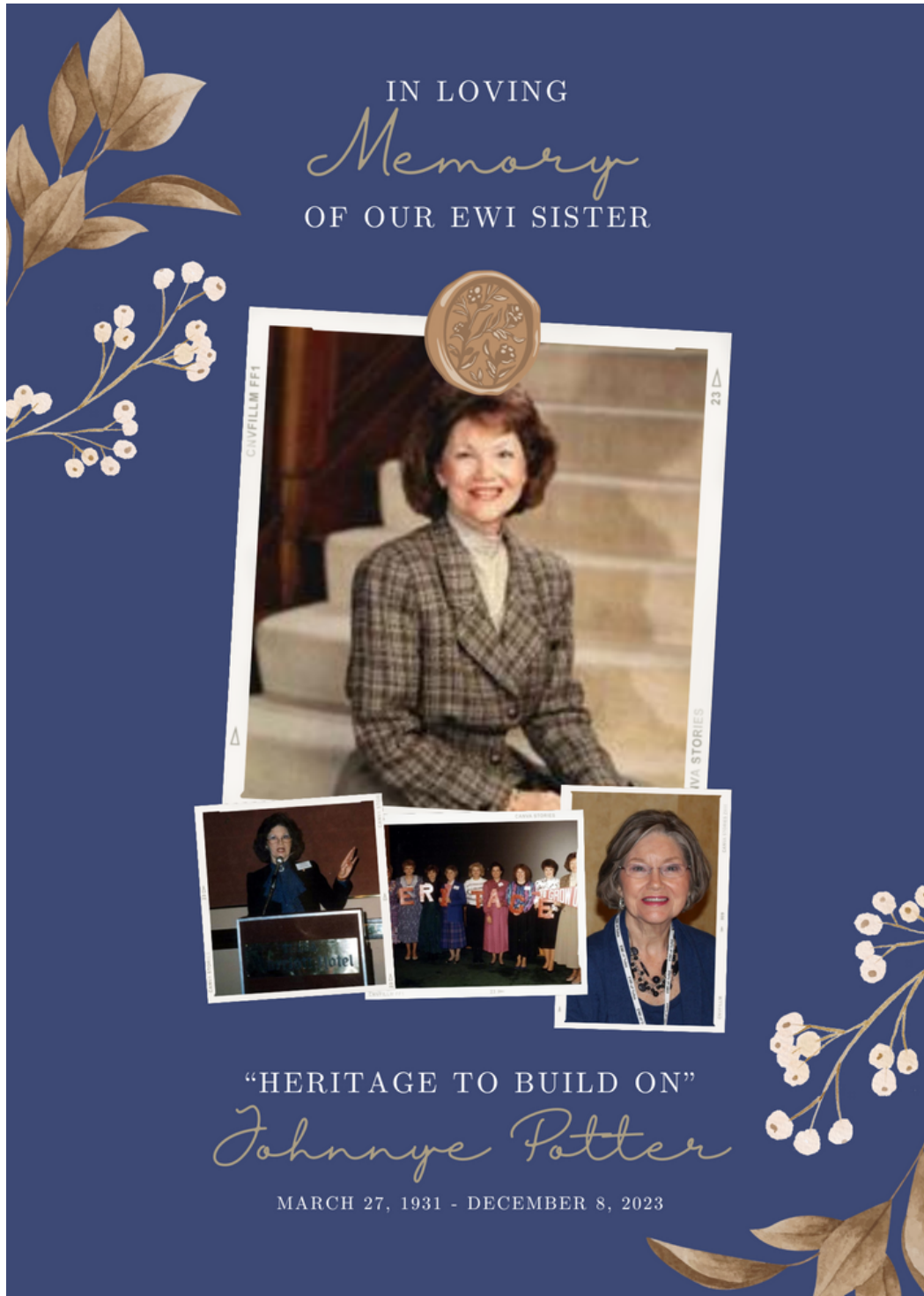
Connie Gibson doesn't believe in the words, "I have to go to work but, I *GET* to go to work today." With over 20+ years in the field of Executive Administration, she has extensive experience with all administrative tasks, including but not limited to calendar management, mentoring colleagues, extensive domestic travel, and organizational management. Connie is an asset to any organization with a deepened servant's heart for her community. Her present role with Food On The Move in Tulsa, Oklahoma is definitely a perfect match.

Connie's experience is not only in Executive Administration, but her leadership skills and outgoing and sincere personality led her to be the Managing Director for an international women's networking organization in Tulsa for over two years in addition to her full-time employment. Membership of the local chapter grew by over 800% in less than nine months with her at the helm. Connie believes that relationship building is key when it comes to being successful; both personally and professionally. On-going connectivity and follow-ups are essential in continuing relationship-building with successful outcomes. Connie creates processes and has a from-start-to-finish fortitude that will encapsulate all levels of employees.

After being one of two international recipients of the first-ever EWI Corporate scholarship essay contest, she connected with Tulsa Chapter Past President, Angie Walters, Schnake Turnbo Frank, for her professional development. Among the tools Connie already possessed in her toolkit, she graduated with additional insight and skills in leadership, confidence, and overall growth. By gaining these additional skills, Connie is undoubtedly on the high road to success and growth within the organization where she works.

In her spare time, Connie spends her time with the love of her life, her daughter, Abby, and her fiancé, Nick. Her hobbies include gardening, cooking, interior design, swimming, traveling, and is an avid music lover.

# IN MEMORY



For full obituary [click here](#).

# CALENDAR OF EVENTS



## JANUARY

**JANUARY 10:** SAA COMMITTEE MEETING, 3:00 PM VIRTUAL MEETING

**JANUARY 11:** EWI OF TULSA MONTHLY CHAPTER MEETING, CHECK-IN AT 5:30 PM, MEETING BEGINS AT 6:00 PM AT ARKEMA

**JANUARY 15:** MEMBERSHIP COMMITTEE MEETING, 10:30 AM VIRTUAL MEETING

**JANUARY 16:** B/C/DP COMMITTEE MEETING, 11:30 AM VIRTUAL MEETING

**JANUARY 17:** PROGRAMS COMMITTEE MEETING, 11:30 AM AT OU TULSA

**JANUARY 24:** EWI OF TULSA BOARD MEETING, NOON AT TULSA TECH LEMLEY CAMPUS

**JANUARY 25:** EWI OF TULSA AFTER-HOURS SOCIAL, 5:00 PM AT WILD FORK UTICA SQUARE



## EVENTS TO ATTEND

### EWI AFTER-HOURS SOCIAL

WHERE: Wild Fork (1820 Utica Square, Tulsa)

WHEN: January 25, 2024, from 5:00 PM

WHAT: Come enjoy happy hour and get to know your fellow EWI sisters in a relaxed social setting

\*After-Hours Socials are not meant to take the place of a regular monthly meeting, they do not count for meeting attendance. All food & beverage costs are the responsibility of the attendee, EWI of Tulsa does not cover the tab.

### 2024 PINK STILETTO GALA

WHERE: River Spirit Casino Resort (8330 Riverside Parkway, Tulsa)

WHEN: February 17, 2024, from 6:00 - 9:00 PM

WHAT: An event to honor local women who have used their platforms to promote breast cancer awareness

For more info reach out to Shari Holdman [sholdman@komen.org](mailto:sholdman@komen.org) or Tamara Conner, who is Chairing the event, at [tamara.conner@oneok.com](mailto:tamara.conner@oneok.com).

# ANNOUNCEMENTS



## READING RALLY

Our Chapter will work with a Tulsa area Title 1 school beginning in the Spring and concluding in September 2024. The initial idea is that our own Marie Stephens, author, will work with the current 3rd-grade students to put together the characters, plot, and art for a book. Over the summer, we will get the book edited, published, and printed. On September 12, we will host our Reading Rally as a lunch meeting and present the then 4th graders with their books, swag bags, and potentially additional books and/or supplies for the school library.

If you are interested in serving on the Reading Rally Committee, please contact LaFonda Ehlers, our B/C/DP Director at [lehlers@moorefuneral.com](mailto:lehlers@moorefuneral.com). Click here for the [Reading Rally Amazon Wishlist](#).

# ANNOUNCEMENTS



**EWI of Tulsa to award \$12,000 in ASIST Scholarships Application  
Deadline: Friday, March 25, 2024  
at 11:59 PM CT**

**<https://apply.mykaleidoscope.com/scholarship/asist2024>**

**The Executive Women International Adult Students in Scholastic Transition (ASIST) Scholarship Program for the benefit of non-traditional students is accepting applications starting January 3, 2024. EWI of Tulsa will award six scholarships in the amount of \$2000 each.**

The ASIST Scholarship is a non-discriminatory, educational scholarship program for the benefit of nontraditional students pursuing an associates, bachelor or master's degree, or a technical/professional certificate. These include persons who are:

- Past high school age and who are entering a college, university, or trade school and/or the workforce for the first time
- Non-traditional students already enrolled in a college, university, or trade school program
- Re-training due to changes in the workplace
- Otherwise are not the traditional college, university, or trade school, recently finished with high school
- This scholarship is open to all full and part-time students, regardless of gender

Applicants must meet the following eligibility requirements:

- Clearly define career goals and objectives
- Specify the educational requirements to attain the above goals and objectives
- Utilize re-entry programs available through colleges/universities/technology centers, community agencies and service groups or career professionals
- 18 years of age or older
- Applicant must reside within the EWI Tulsa Chapter boundaries: Tulsa County, Osage County, Creek County, Rogers County, and Wagoner County.

Applications must be completed online. Deadline for submissions is **Monday, March 25, 2024 at 11:59 PM CT**. EWI of Tulsa winners will be notified end of April and invited to attend the scholarship program awards meeting scheduled for May 9, 2024.

**The link to application is: <https://apply.mykaleidoscope.com/scholarship/asist2024>**

If you have any questions, please contact:  
Janis Cohlma, Tropical Plant Design, Inc.  
Email: [janis@tropicalplantdesign.com](mailto:janis@tropicalplantdesign.com)

# BIRTHDAYS & FIRM ANNIVERSARIES

## JANUARY BIRTHDAYS

**January 4:** Brandi Schomer, Representative, Montereau

**January 4:** Jamie Reed, Representative, ONEOK, Inc.

**January 6:** Jessica Barlow-Schmidt, Representative, Burnett Home Improvement

**January 6:** Walter Hulse, Executive, ONEOK, Inc.

**January 9:** Tim Lyons, Executive, TTCU Federal Credit Union

**January 17:** Ashley Arnold, Representative, World Travel Service, LLC

**January 17:** Jessica Bolen, Executive, The Stonehaven

**January 20:** Aubry Oehlberg, Representative, Firststar Bank

**January 20:** Natalie Gilson, Representative, Momentum3

**January 24:** Darlene Adkins, Representative/Executive, KMS

**January 24:** Mark Cohlmiia, Executive, Tropical Plant Design

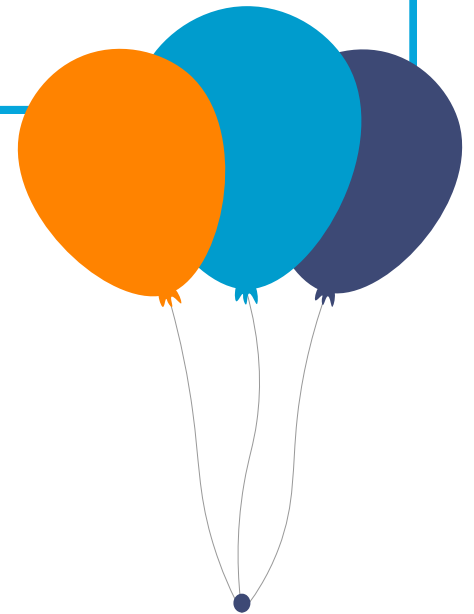
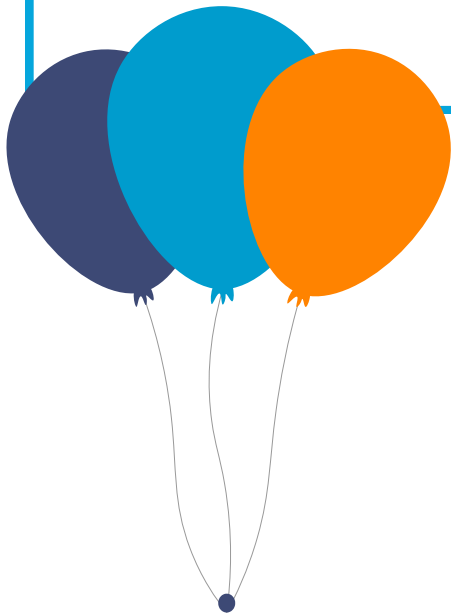
**January 26:** Cayanne Brander, Representative, Warren Professional Building Corp.

**January 27:** Janis Cohlmiia, Representative, Tropical Plant Design

## JANUARY ANNIVERSARIES

**January 1984:** Helmerich & Payne, Inc.

**January 2023:** Momentum3





## INFORMATION



### DOOR PRIZES

Interested in donating a door prize for an upcoming meeting? Please contact Marnie Choisnard at [machoisnard@saintfrancis.com](mailto:machoisnard@saintfrancis.com). As always, we appreciate your generosity!



### MENTORS

Have questions about who your mentor is? Reach out to Aubry Oehlberg and she will help you out! [aohlberg@firststar-bank.com](mailto:aohlberg@firststar-bank.com)



### NEWS & PHOTOS

Want your news or photos in the next Connect? Email [peyton.s@polstontax.com](mailto:peyton.s@polstontax.com)



### LIFE EVENTS

If you are having any life events that you wish to share with the Chapter, please send them to Jessica Vagin at [Jessica.vagin@legendseniorliving.com](mailto:Jessica.vagin@legendseniorliving.com). We want to make sure the Chapter leadership and membership are kept informed of important happenings and are reaching out to support you! It is important to your Board of Directors that we celebrate your personal and professional accomplishments but also offer care and support in the event of surgery, illness or loss.

# CONTACT

## President

Jody Davis, Accent Moving, Storage & Logistics  
[jodydavis@accentmoving.com](mailto:jodydavis@accentmoving.com)  
918-671-5302

## Vice President

Susan Miller, Warren Professional Building Corp.  
[smiller@wpbctulsa.com](mailto:smiller@wpbctulsa.com)  
918-481-7953

## Secretary

Arquicia Franklin, Get Beyond  
[arquicia.franklin@getbeyond.com](mailto:arquicia.franklin@getbeyond.com)  
918-691-7148

## Treasurer

Sara Shaklee, Trust Company of Oklahoma  
[sshaklee@trustok.com](mailto:sshaklee@trustok.com)  
918-899-2594

## Sergeant-at-Arms

Jessica Vagin, The Stonehaven  
[jessica.vagin@legendseniorliving.com](mailto:jessica.vagin@legendseniorliving.com)  
918-955-4149

## B/C/DP Director

Dr. LaFonda Ehlers, Moore Funeral Homes  
[lehlers@moorefuneral.com](mailto:lehlers@moorefuneral.com)  
918-744-1202

## Membership (Recruitment)

Shari Holdman, Susan G. Komen  
[sholdman@komen.org](mailto:sholdman@komen.org)  
918-728-0492

## Membership (Retention)

Aubry Oehlberg, Firststar Bank  
[aoehlberg@firststar-bank.com](mailto:aoehlberg@firststar-bank.com)  
918-853-2654

## Programs

Tinesa Siebert, The University of Oklahoma  
Foundation  
[tsiebert@ou.edu](mailto:tsiebert@ou.edu)  
918-645-3080

## Communications

Peyton Shaffer, Polston Tax  
[peyton.s@polstontax.com](mailto:peyton.s@polstontax.com)  
918-520-1167

## Advisor

Janis Cohlma, Tropical Plant Design  
[janis@tropicalplantdesign.com](mailto:janis@tropicalplantdesign.com)  
918-622-3400

## Advisor

Tamara Conner, ONEOK, Inc.  
[tamara.conner@oneok.com](mailto:tamara.conner@oneok.com)  
918-588-7902

## Advisor

Judy Russell, ONEOK, Inc.  
[jrussell@oneok.com](mailto:jrussell@oneok.com)  
918-588-7931

## Advisor

Felicia Senter, Tulsa Tech  
[felicia.senter@tulsatech.edu](mailto:felicia.senter@tulsatech.edu)  
918-406-6106



**CONTACT US**

## ABOUT US

### OUR MISSION

EXECUTIVE WOMEN INTERNATIONAL (EWI) BRINGS TOGETHER KEY INDIVIDUALS FROM DIVERSE BUSINESSES FOR THE PURPOSE OF: PROMOTING MEMBER FIRMS, ENHANCING PERSONAL AND PROFESSIONAL DEVELOPMENT, AND ENCOURAGING COMMUNITY INVOLVEMENT.

### OUR VISION

TO ENHANCE PROFESSIONAL GROWTH AND DEVELOPMENT WITHIN A DIVERSE GROUP OF WOMEN WHILE EMPOWERING THEM TO MAKE A DIFFERENCE AS THEY INSPIRE OTHERS.

### OUR VALUES

INTEGRITY | EXCELLENCE | RESPECT | COLLABORATION

### EWI

EWI OF TULSA IS A CHAPTER OF EXECUTIVE WOMEN INTERNATIONAL ("EWI"). IF YOU WANT TO KNOW MORE ABOUT EWI INCLUDING THE MANY DEVELOPMENT OPPORTUNITIES OR CONNECT WITH MEMBERS IN OTHER CHAPTERS, PLEASE TAKE THE TIME TO REVIEW THE [EWI CORPORATE WEBSITE](http://WWW.EWITULSA.ORG).