

Tulsa EWI Connect

CHARTERED 1956

DECEMBER 2023

LETTER FROM THE PRESIDENT

JODY DAVIS | ACCENT MOVING, STORAGE & LOGISTICS

For me, Thanksgiving represents the beginning of “The Most Wonderful Time of the Year.” Yes, I am that girl! I start decorating for Christmas right after Halloween. It’s a process, so don’t judge me. I need plenty of time to pull it all out, organize it, and put it up...and then I rearrange it and tweak it all season. Also, I can never get the top of my trees perfect, which makes me crazy. But, as much as I love the hustle and bustle of the holidays, it is also a very special and holy time for me.

In an effort to keep my young daughters focused on our true meaning of Christmas, I followed Kathie Lee Gifford’s gift-giving guide. The Baby Jesus received three gifts from the wise men: gold, frankincense and myrrh. So, my girls received three gifts (plus stockings). As a single mom, it helped us keep it all in perspective. Even today my girls, their husbands and the grands get three gifts. In return, I only ask for one thing from my kids: their time, their most precious commodity right now with babies, work and busy lives. For several years now, we have done our best to set aside three nights when the Fab Five (as we call ourselves) go out for a nice dinner somewhere my kids have never been. It is a grown-ups-only dining experience, and we look forward to it every year. I want to make sure that we never lose focus on the “Reason for the Season” and what the most important gift is.

However, the holidays are not the same for everyone. I cannot help but think of my son-in-law, who is facing the first holiday season without his Mom. My heart and prayers go out to those who, for various reasons, dread the holiday season. I hope each of us can be sensitive to those we encounter during the next few weeks and offer compassion, grace and love. You never know what others might be facing. May we all feel peace as we celebrate in our special way.

I wish you much joy, peace and love this holiday season. May you find your *For Such A Time As This!*

Very truly in EWI service,

Jody

*For Such
A Time
AS THIS*



2023-2024 OFFICERS & DIRECTORS

PRESIDENT

JODY DAVIS | ACCENT MOVING, STORAGE & LOGISTICS

VICE PRESIDENT

SUSAN MILLER | WARREN PROFESSIONAL BUILDING CORP.

SECRETARY

ARQUICIA FRANKLIN | GET BEYOND

TREASURER

SARA SHAKLEE TRUST | COMPANY OF OKLAHOMA

SERGEANT-AT-ARMS

JESSICA VAGIN | THE STONEHAVEN

B/C/DP DIRECTOR

DR. LAFONDA EHLERS | MOORE FUNERAL HOMES

MEMBERSHIP (RECRUITMENT)

SHARI HOLDMAN | SUSAN G. KOMEN

MEMBERSHIP (RETENTION)

AUBRY OEHLBERG | FIRSTSTAR BANK

PROGRAMS

TINESA SIEBERT | THE UNIVERSITY OF OKLAHOMA FOUNDATION

COMMUNICATIONS

PEYTON SHAFFER | POLSTON TAX

ADVISOR

TAMARA CONNER | ONEOK, INC.

ADVISOR

FELICIA SENTER | TULSA TECH

ADVISOR

JUDY RUSSELL | ONEOK, INC.

ADVISOR

JANIS COHLMIA | TROPICAL PLANT DESIGN



IN THIS ISSUE

- **President's Letter**
- **2023-2024 Vision**
- **Monthly Chapter Meeting**
- **November Chapter Meeting Highlights**
- **Sip & Shop at Amber Marie & Co.**
- **November Meeting Feedback**
- **Firm Spotlights**
- **Second Thursday-Dana Nichols**
- **In Memory**
- **Calendar of Events**
- **Events to Attend**
- **Announcements**
- **December Birthdays and Firm Anniversaries**
- **Information**
- **Contact**
- **About Us**



<https://www.facebook.com/ewitulsa/>



<https://www.linkedin.com/in/ewi-tulsa-1596791b9/>



<https://www.instagram.com/ewitulsa/>



https://twitter.com/EWI_Tulsa

PRESIDENT'S 2023-2024 VISION

- I strive to create a Board of unity and strength that moves together in a manner that will build leaders for the years to come.
- Grow the membership with five quality firms and/or Individual Members with representatives who become engaged and involved.
- Grow the number of mentors to ensure all new members have a mentor and utilize our Past Presidents in this capacity, as they are our Chapter's most knowledgeable resource.
- Have a new member orientation once per quarter, trying to include an option before or after a monthly meeting.
- Invite new members to attend a Board meeting.
- Work to move the Chapter onto the new Star Chapter platform – we are already in the process!!
- Ensure that all records are accurate and up to date.
- Have the Executive Breakfast in the 1st quarter of 2024.
- Start a Lunch Bunch – each quarter–target new members.
- Have an After Hours Social each quarter.
- Have two Firm nights and/or a Mini Firm Night.
- Achieve the Chapter of Excellence AGAIN.
- Host a Fundraiser for the Education Fund at Amber Marie & Co – November 16!
- In September 2024 – Have an EWI team at Race for the Cure.

Your incredible Board of Directors is already working diligently to support the above goals. But also, many of you have also caught the vision and found your For Such A Time As This within our Chapter.

MONTHLY CHAPTER MEETING



DECEMBER CHAPTER MEETING

Business Meeting

Please join us for our Business Meeting this month. We will be discussing our December Philanthropy and the proposed Amendments to the Chapter Standing Rules and Procedures, as well as the proposed updated Strategic Plan.



Theme: Ugly Christmas Sweater

Date: Thursday, December 14, 2023

Time: 5:30 PM Social | 6:00 PM Meeting


Location: AMC Mortgage - 7211 S Yale Ave, Tulsa, OK 74136

Parking: Free parking available at the meeting location

Cost: \$45 Members & Guests | \$30 Sustaining

Please [click here](#) to connect to the RSVP form.

- RSVP by [Friday, December 8th](#) so that we may provide the appropriate seating arrangements and dinner servings.
- Please let us know if you have any dietary restrictions.
- No RSVPs and no-shows to meetings will be invoiced! Business Meeting fees are mandatory for all members. While you will be invoiced regardless of attendance, please take the time to RSVP.



Do you have a door prize you wish to donate? If so, please contact Marnie Choisnard at machoisnard@saintfrancis.com. As always, we appreciate your generosity!

Note from the President:

I look forward to seeing you at the December meeting. It will be a Business Meeting and our Chapter Philanthropy. You can find more information regarding our philanthropy further down in The Connect! Watch your email for the notice of the Business Meeting and the proposed Amendments to the Chapter Standing Rules and Procedures, as well as, the proposed updated Strategic Plan.

Be sure to wear your Ugly Christmas Sweater to our December Meeting!

Do you want to donate a Door Prize for the December meeting? If so, please contact Marnie Choisnard at machoisnard@saintfrancis.com. Thank you to those who donated amazing door prizes in November: Amy Henderson – Tulsa Oilers; Janis Cohlma – Tropical Plant Design; & Eva Blair – T.C. Blair & Associates.

NOVEMBER CHAPTER MEETING HIGHLIGHTS



Tamara Conner, ONEOK, Inc.



Connie Saunders, Burnett Home Improvement & Felicia Senter, Tulsa Tech



Judy Russell, ONEOK, Inc. & Colleen Farris, Moody's Jewelry



NOVEMBER CHAPTER MEETING HIGHLIGHTS



Jessica Vagin, The Stonehaven, Elizabeth Iobst, Helton Law Firm, Sarah Bowen, Tulsa Zoo, & Tonya Solomon, ARC Document Solutions

[Click here for Committee Sign-Up!](#)



MEETING RECAP:

November was a great month for EWI of Tulsa. If you missed our monthly meeting, it is not too late to sign up for a committee this year. Each Director gave an excellent presentation regarding our committees and what is needed. Thank you to Tinesa Siebert, The University of Oklahoma Foundation/Programs, Shari Holdman, Susan G. Komen/Membership Recruitment and Aubry Oehlberg, Firststar Bank/Membership Retention, LaFonda Ehlers, Moore's Funeral Home/B/C/DP Director, Peyton Shaffer, Polston Tax Management/Communications and Jessica Vagin, The Stonehaven/SAA for your presentations. I have a lofty goal to have 100% of our membership plugged into a committee! Did you sign up? Where can I plug you in?

-Jody

SHOP & SIP AT AMBER MARIE & CO.



President, Jody Davis, Accent Moving, Storage & Logistics & Marnie Choisnard, Health Zone Saint Francis



Marnie Choisnard, Health Zone Saint Francis & Dr. LaFonda Ehlers, Moore Funeral Homes



Jessica Vagin, The Stonehaven, Sara Shaklee, Trust Company of Oklahoma, Aubry Oehlberg, Firststar Bank, & Felicia Senter, Tulsa Tech



Jessica Vagin, The Stonehaven, Arquica Franklin, Get Beyond, & Peyton Shaffer, Polston Tax

SHOP & SIP AT AMBER MARIE & CO.



Trish Richey & Jamie Harris, Helmerich & Payne, Inc.



Felicia Senter, Tulsa Tech

Thank You

Thank you to everyone who turned out for the Shop & Sip at Amber Marie & Co. We had a fantastic turnout! We received a check in the amount of \$1,648.85 for our Education Fund. Your support was amazing. You reposted the Facebook Live, you invited your friends, family, and co-workers. You made it an incredible event!
- Jody



Jessica Bolen, The Stonehaven, Janis Cohlmia, Tropical Plant Design, & Jessica Vagin, The Stonehaven

NOVEMBER MEETING FEEDBACK

THE PRESENTATION

- I had a wonderful time and learned more about each of the committees as well as the Directors.
- So excited to see what this new Board accomplishes! I know it will be GREAT THINGS!
- Very well organized.
- I LOVE how Jody's theme was used in everyone's presentation!
- Fun evening - enjoyed hearing from Board members and seeing so many engaged reps.
- Great energy! The Board did a great job presenting!
- Impressed with the new Board. The ladies gave great presentations.
- Each year this program gets better - the leaders get better at recruiting for their teams!
- Great meeting. Jody and her new Board did an amazing job presenting and encouraging committee sign-ups.
- Loved the enthusiasm and information. Great presentations!

FIRM SPOTLIGHTS



TULSA ZOO'S INAUGURAL HOLIDAY ORNAMENT!

Give WILDLY This Holiday Season With Tulsa Zoo's Inaugural Annual Ornament!

2023 Limited edition Meerkat footprints are available now through December 31, 2023, for \$25.

- 2.75" x 2.75"
 - Footprints created by Shaka the meerkat
 - Proceeds from ornament sales go directly toward their operating fund
- Celebrate the pawlidays and get yours today!

[Click here.](#)

TULSA OILERS HOCKEY GAME NIGHT AT BOK CENTER!

Amy Henderson would love to invite all our EWI ladies to attend a game as her guests! Just contact Amy at least a day before the game you want to attend and let her know how many tickets you would like at amy@tulsaoilers.com!

Dates:

- Saturday December 02, 2023** Utah | Native American Night
- Sunday December 03, 2023** Utah | Family Funday/Post Game Skate
- Sunday December 17, 2023** Wichita | Family Funday/Post Game Skate
- Friday December 22, 2023** Kansas | City Charlie Brown Christmas
- Friday January 05, 2024** Rapid City | Blanket Drive-CH. 8
- Saturday January 06, 2024** Rapid City | Alzheimer's Awareness Night
- Sunday January 07, 2024** Rapid City | Family Funday/Post Game Skate



SECOND THURSDAY



Hello new friends, I'm glad we're here
Can you believe, another new year
How will I serve-what is my pace
Am I doing enough-can I ask for grace
Learning, growing, transitioning, transferring
Moving, supporting, renewing, resting
Which one is she
Which one am I
We are one living, breathing EWI
Hello old friends, as we reminisce
Still together, still strong
For such a time as this

Dana Nichols, Sustaining
Coterra Energy Inc



IN MEMORY

IN LOVING

memory of



STEVE TURNBO

09.26.1945 - 11.15.2023
SATURDAY, DECEMBER 2, AT 1:00 PM
SHARP CHAPEL - THE UNIVERSITY OF TULSA
800 S. TUCKER DR, TULSA

For full obituary [click here](#).

CALENDAR OF EVENTS



DECEMBER

DECEMBER 13: B/C/DP COMMITTEE MEETING, 11:30 AM AT MCNELLIES SOUTH

DECEMBER 14: EWI OF TULSA MONTHLY CHAPTER MEETING, CHECK-IN AT 5:30 PM, MEETING BEGINS AT 6:00 PM AT AMC MORTGAGE

DECEMBER 18: MEMBERSHIP COMMITTEE MEETING, 10:30 AM VIRTUAL MEETING

DECEMBER 20: BOARD MEETING, NOON LOCATION TBA



EVENTS TO ATTEND

2024 PINK STILETTO GALA

WHERE: River Spirit Casino Resort (8330 Riverside Parkway, Tulsa)

WHEN: February 17, 2024, from 6:00 - 9:00 PM

WHAT: An event to honor local women who have used their platforms to promote breast cancer awareness

For more info reach out to Shari Holdman sholdman@komen.org or Tamara Conner, who is Chairing the event, at tamara.conner@oneok.com.

ANNOUNCEMENTS



READING RALLY

I presented my vision for the 2024 Reading Rally. It is patterned after the Corporate Reading Rally many of us experienced at LCAM 2023. The big picture is that our Chapter will work with a Tulsa area Title 1 school beginning in the Spring and concluding in September 2024. The initial idea is that our own Marie Stephens, author, will work with the current 3rd-grade students to put together the characters, plot, and art for a book. Over the summer, we will get the book edited, published, and printed. In September, we will host our Reading Rally as a lunch meeting (September 12) and present the then 4th graders with their books, swag bags, and potentially additional books and/or supplies for the school library.

If you are interested in serving on the Reading Rally Committee, please contact LaFonda Ehlers, our B/C/DP Director at lehlers@moorefuneral.com

-Jody

ANNOUNCEMENTS

DECEMBER PHILANTHROPY

With Reading Rally in mind, The Tulsa Chapter Education Fund (our own scholarship program and literacy initiative) will be our December Philanthropy. There are several ways to participate:

1. Donation to the EWI of Tulsa Education Fund, a 501(c)(3).
You can earmark your tax-deductible donation:
 - a. Scholarship dollars for the 2023-2024 B/C/DP year.
 - b. The 2024 Reading Rally.
"The Festival of the Pines" – 65 books needed
2. Amazon "Wish List" items can be purchased to help with Reading Rally. [Click here.](#)

Please contact Jody Davis at jodydavis@accentmoving.com if you have any questions regarding the December Philanthropy. Watch your email for more information coming soon.



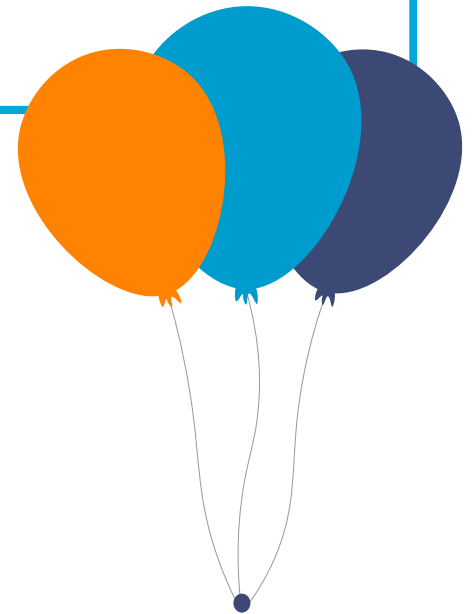
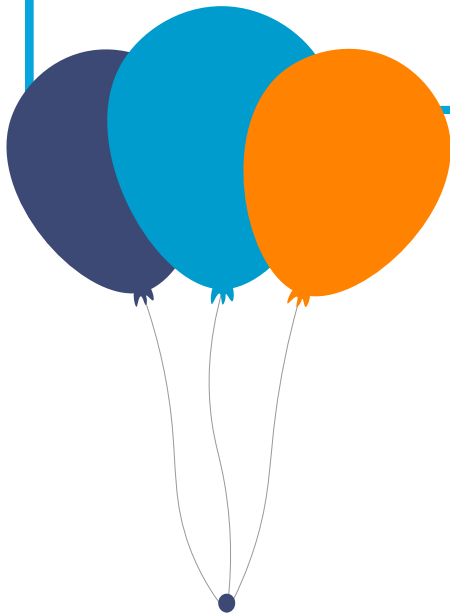
BIRTHDAYS & FIRM ANNIVERSARIES

DECEMBER BIRTHDAYS

- December 6:** Rosemary Gaffey, Sustaining
December 7: John W. Lindsay, Executive, Helmerich & Payne, Inc.
December 11: Kuma Roberts, Executive, Arrowhead Consulting
December 14: Amanda Grace, Representative, Project Hope Worldwide
December 16: Chris Swart, Exec./Rep., Coldwell Banker Select
December 16: Eva Blair, Exec./Rep., TC Blair & Associates
December 17: Autumn Everett, Representative, SERVPRO of South Tulsa County
December 17: Gene Callahan, Honorary Member
December 25: Judy Russell, Representative, ONEOK, Inc.
December 25: Myra Trahern, Life Member
December 27: Vernice Bersche, Sustaining
December 29: Jan Ehrle, Representative, Mid-America Land, Grain & Cattle Co., Inc.
December 30: Roberta Montgomery, Sustaining

DECEMBER ANNIVERSARIES

- December 2016:** TC Blair & Associates
December 2020: Flintco, LLC



INFORMATION



DOOR PRIZES

Interested in donating a door prize for an upcoming meeting? Please contact Tinesa Siebert at tsiebert@ou.edu or Jody Davis at jodydavis@accentmoving.com.



MENTORS

Have questions about who your mentor is? Reach out to Aubry Oehlberg and she will help you out!
aohlberg@firststar-bank.com



NEWS & PHOTOS

Want your news or photos in the next Connect? Email peyton.s@polstontax.com



LIFE EVENTS

If you are having any life events that you wish to share with the Chapter, please send them to Jessica Vagin at Jessica.vagin@legendseniorliving.com We want to make sure the Chapter leadership and membership are kept informed of important happenings and are reaching out to support you! It is important to your Board of Directors that we celebrate your personal and professional accomplishments but also offer care and support in the event of surgery, illness or loss.

CONTACT

President

Jody Davis, Accent Moving, Storage & Logistics
jodydavis@accentmoving.com
918-671-5302

Vice President

Susan Miller, Warren Professional Building Corp.
smiller@wpbctulsa.com
918-481-7953

Secretary

Arquicia Franklin, Get Beyond
arquicia.franklin@getbeyond.com
918-691-7148

Treasurer

Sara Shaklee, Trust Company of Oklahoma
sshaklee@trustok.com
918-899-2594

Sergeant-at-Arms

Jessica Vagin, The Stonehaven
jessica.vagin@legendseniorliving.com
918-955-4149

B/C/DP Director

Dr. LaFonda Ehlers, Moore Funeral Homes
lehlers@moorefuneral.com
918-744-1202

Membership (Recruitment)

Shari Holdman, Susan G. Komen
sholdman@komen.org
918-728-0492

Membership (Retention)

Aubry Oehlberg, Firststar Bank
aoehlberg@firststar-bank.com
918-853-2654

Programs

Tinesa Siebert, The University of Oklahoma
Foundation
tsiebert@ou.edu
918-645-3080

Communications

Peyton Shaffer, Polston Tax
peyton.s@polstontax.com
918-520-1167

Advisor

Janis Cohlma, Tropical Plant Design
janis@tropicalplantdesign.com
918-622-3400

Advisor

Tamara Conner, ONEOK, Inc.
tamara.conner@oneok.com
918-588-7902

Advisor

Judy Russell, ONEOK, Inc.
jrussell@oneok.com
918-588-7931

Advisor

Felicia Senter, Tulsa Tech
felicia.senter@tulsatech.edu
918-406-6106



CONTACT US

ABOUT US

OUR MISSION

EXECUTIVE WOMEN INTERNATIONAL (EWI) BRINGS TOGETHER KEY INDIVIDUALS FROM DIVERSE BUSINESSES FOR THE PURPOSE OF: PROMOTING MEMBER FIRMS, ENHANCING PERSONAL AND PROFESSIONAL DEVELOPMENT, AND ENCOURAGING COMMUNITY INVOLVEMENT.

OUR VISION

TO ENHANCE PROFESSIONAL GROWTH AND DEVELOPMENT WITHIN A DIVERSE GROUP OF WOMEN WHILE EMPOWERING THEM TO MAKE A DIFFERENCE AS THEY INSPIRE OTHERS.

OUR VALUES

INTEGRITY | EXCELLENCE | RESPECT | COLLABORATION

EWI

EWI OF TULSA IS A CHAPTER OF EXECUTIVE WOMEN INTERNATIONAL ("EWI"). IF YOU WANT TO KNOW MORE ABOUT EWI INCLUDING THE MANY DEVELOPMENT OPPORTUNITIES OR CONNECT WITH MEMBERS IN OTHER CHAPTERS, PLEASE TAKE THE TIME TO REVIEW THE [EWI CORPORATE WEBSITE](http://WWW.EWITULSA.ORG).