

Tulsa EWIConnect

CHARTERED 1956

SEPTEMBER 2023

LETTER FROM THE PRESIDENT

TAMARA CONNER | ONEOK, INC.

Dear EWI Tulsa Chapter Members,

I hope this message finds you well as we transition into the beautiful month of September. It's a time of new beginnings, and we have so much to look forward to in our chapter's journey. Let's dive right into all the exciting updates from August and the upcoming events in September.

Executive of the Year Banquet at Tulsa Country Club: Our August highlight was undoubtedly the Executive of the Year Banquet, held at the prestigious Tulsa Country Club. We were honored to celebrate and recognize Dr. Joseph Moore for his outstanding achievements and leadership in our Chapter. Dr. Moore's dedication and contributions have been truly inspiring, and we are proud to have him as part of our EWI family.

Reading Rally at The Lindsey House: A heartfelt thank you to all our members who participated in our Reading Rally this month. Together, we provided books to the children at The Lindsey House, making a positive impact on their lives and promoting literacy. Your support and involvement in such community initiatives continue to showcase the compassion and generosity of our EWI Tulsa Chapter.

"THE FUTURE
BELONGS TO
THOSE WHO
BELIEVE IN
THE BEAUTY
OF THEIR
DREAMS."
ELEANOR ROOSEVELT

LCAM in Chattanooga, TN - September 2023: It is time! September brings an exciting opportunity for all of us to connect and learn. The Leadership Caucus and Annual Meeting (LCAM) took place in the charming city of Chattanooga, Tennessee and we had 11 of us attending this year. LCAM is a fantastic platform for networking, sharing insights, and gaining fresh perspectives to further empower our members.

September Quote: As we embrace September, let's draw inspiration from the words of Eleanor Roosevelt: "The future belongs to those who believe in the beauty of their dreams." Let this be a reminder that our dreams and aspirations are the driving force behind our achievements. Together,

*Bloom Where You
Are Planted*



2022-2023 OFFICERS & DIRECTORS

PRESIDENT

TAMARA CONNER ONEOK, INC.

VICE PRESIDENT

SAM SCHULTZ JPMORGAN CHASE & CO.

SECRETARY

ELIZABETH BUGAY FOOD BANK OF EASTERN OKLAHOMA

TREASURER

HEATHER STEPHEN HELMERICH & PAYNE, INC.

SERGEANT-AT-ARMS

SARA SHAKLEE TRUST COMPANY OF OKLAHOMA

B/C/DP DIRECTOR

KELLI GERMANDT TRUST COMPANY OF OKLAHOMA

MEMBERSHIP (RECRUITMENT)

JONI WHITEHEAD ANCHOR SEARCH & CONSULTING, LLC

MEMBERSHIP (RETENTION)

TONYA SOLOMON ARC DOCUMENT SOLUTIONS

PROGRAMS

FELICIA SENTER TULSA TECH

COMMUNICATIONS

AUTUMN EVERETT SERVPRO OF TULSA COUNTY
PEYTON SHAFFER (INTERIM) POLSTON TAX

ADVISOR

LORI HEERLYN T.D. WILLIAMSON

ADVISOR

JUDY RUSSELL ONEOK, INC.

ADVISOR

ANGIE WALTERS SCHNAKE TURNBO FRANK

ADVISOR

JANIS COHLMIA TROPICAL PLANT DESIGN

Tulsa EWIConnect

CHARTERED 1956

SEPTEMBER 2023

LETTER FROM THE PRESIDENT CONTINUED

TAMARA CONNER | ONEOK, INC.

we can make our visions for EWI Tulsa Chapter a reality. Remember to "Bloom Where You Are Planted" - find growth and success right where you are and let your efforts flourish.

Stay tuned for more updates and details on LCAM in the coming weeks. We look forward to a month filled with growth, camaraderie, and continued success. Thank you for your dedication to EWI Tulsa Chapter, and I look forward to connecting with you all soon.

Warm regards,
Tamara Conner
President, EWI Tulsa Chapter



2022-2023 OFFICERS & DIRECTORS

PRESIDENT

TAMARA CONNER ONEOK, INC.

VICE PRESIDENT

SAM SCHULTZ JPMORGAN CHASE & CO.

SECRETARY

ELIZABETH BUGAY FOOD BANK OF EASTERN OKLAHOMA

TREASURER

HEATHER STEPHEN HELMERICH & PAYNE, INC.

SERGEANT-AT-ARMS

SARA SHAKLEE TRUST COMPANY OF OKLAHOMA

B/C/DP DIRECTOR

KELLI GERNANDT TRUST COMPANY OF OKLAHOMA

MEMBERSHIP (RECRUITMENT)

JONI WHITEHEAD ANCHOR SEARCH & CONSULTING, LLC

MEMBERSHIP (RETENTION)

TONYA SOLOMON ARC DOCUMENT SOLUTIONS

PROGRAMS

FELICIA SENTER TULSA TECH

COMMUNICATIONS

AUTUMN EVERETT SERVPRO OF TULSA COUNTY
PEYTON SHAFFER (INTERIM) POLSTON TAX

ADVISOR

LORI HEERLYN T.D. WILLIAMSON

ADVISOR

JUDY RUSSELL ONEOK, INC.

ADVISOR

ANGIE WALTERS SCHNAKE TURNBO FRANK

ADVISOR

JANIS COHLMIA TROPICAL PLANT DESIGN

Tulsa ewiConnect

IN THIS ISSUE

- [President's Letter](#)
- [September 21st Monthly Meeting](#)
- [August Chapter Meeting Highlights](#)
- [August Meeting Feedback](#)
- [Executive Spotlights](#)
- [Calendar of Events](#)
- [Events to Attend](#)
- [Announcements](#)
- [September Birthdays and Firm Anniversaries](#)
- [Information](#)
- [Contact](#)
- [About Us](#)



<https://www.facebook.com/ewitulsa/>



<https://www.linkedin.com/in/ewi-tulsa-1596791b9/>



<https://www.instagram.com/ewitulsa/>



https://twitter.com/EWI_Tulsa

SEPTEMBER MONTHLY MEETING

WELCOME
September

SEPTEMBER CHAPTER MEETING

Date: Thursday | September 21, 2023

Time: 5:30pm Social | 6:00pm Meeting

Venue: OSU Tulsa – B.S. Roberts Room
700 N. Greenwood
Tulsa, OK 74106

Parking: Free Parking Available at
the meeting location

Dress: Business

Cost: \$40.00 Members & Guests
\$30.00 Sustaining Members

> **RSVP by Friday, September 15th** so that we may provide the appropriate seating arrangements and dinner servings.

> *Please let us know if you have any dietary restrictions.*

No RSVP & No Shows to meetings will be invoiced!

Please take the time to respond to each meeting invitation so we can bill you appropriately. If you are unable to attend a meeting, let SAA, know 24 hours prior to the meeting to be removed from the count by emailing saawitulsa@gmail.com.

MEETING THEME



Tulsa
ewi

CONNECTIONS | CAREERS | COMMUNITY

Please click [HERE](#) to connect to the RSVP form.
We look forward to seeing you at the meeting!

Do you have a door prize you wish to donate? If so, please contact Tamara Connor at Tamara.Conner@oneok.com.
As always, we appreciate your generosity.

AUGUST CHAPTER MEETING HIGHLIGHTS



Executive of the Year, Dr. Joseph Moore, Moore Funeral Homes



Felicia Senter, Tulsa Tech & Marie Stephens, Dare to Develop Industries



Jeannie Murphy, Grimsley's Janitorial Supplies & Lisa Stansill, Sustaining

AUGUST CHAPTER MEETING HIGHLIGHTS



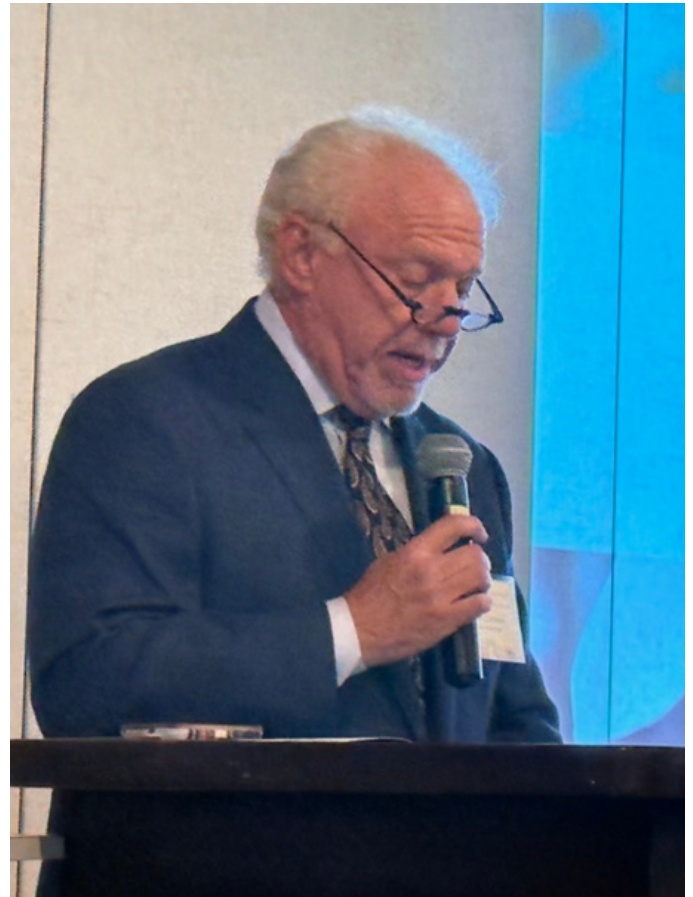
Peyton Shaffer, Polston Tax & Sarah Bowen, Tulsa Zoo



Bobby Perry & Tonya Solomon, ARC Document Solutions



Dr. Joseph Moore, Lynne Moore, & Dr. LaFonda Ehlers, Moore Funeral Homes



Mark Cohlmia, Tropical Plant Design

AUGUST MEETING FEEDBACK

THE FOOD

- Delicious
- Food was cold
- My food could have been a little warmer.
- Service, staff, and food were above average - excellent!
- Good service
- It was good overall but needed more sauce as the chicken was a bit dry with the breading.
- The servers were wonderful, and the food was exceptional.
- Delicious.

THE VENUE

- Nice change of pace
- Nice venue, a nice change of atmosphere, and a perfect for EOY.
- Love this club and its views during dinner.
- very nice
- Beautiful setting! Perfect meeting for a guest to attend!
- Absolutely loved it!
- Good parking and a pleasant atmosphere
- Very nice!

THE PRESENTATION

- Needed more time with Kris
- Not sure a speaker was needed for the EOY evening.
- I enjoyed the speaker, but I felt like it overshadowed the celebration of the EOY.
- Enjoyed Kris Reynolds very much. Since Dr. Moore knew he was receiving the award, the slide show of all EOY winners should have just run during the reception and again at dinner. I was sad the EWISP winner was not recognized better. Missed opportunity to show our new members and executives more about our scholarship program.
- Very good!
- Really informative presentation.

EXECUTIVE SPOTLIGHTS

LYNDA WINGO, MISS HELEN'S PRIVATE SCHOOL, CELEBRATES 50 YEARS

In her 50th year of leading the school, Lynda has witnessed the school's expansion from a half-day program to full-day as more mothers joined the workforce. Classrooms were added, and the school, which serves students ages 3 through fifth grade, moved permanently to its current location at 4849 S. Mingo Road in 1996.

In her five decades of business, Lynda has been an advocate for small business. "I believe in small business because I think that gives a person a chance to really grow within themselves," she says. "I'm probably a little partial to women-owned businesses because back in 1954, there just were not a lot of women-owned businesses. Miss Helen was one of those pioneers."

Lynda has been involved with the Broken Arrow and Tulsa Regional chambers since the mid-1990s. She formed OK2GROW with fellow chamber members Larry Mocha and Jerry Holder to address educational and workforce development across the state.

For full article read [here](#).



KUMA ROBERTS, ARROWHEAD CONSULTING, NAMED NEW PRESIDENT & CEO OF BLACK WALL STREET CHAMBER

The Black Wall Street Chamber of Commerce has named Kuma Roberts as its incoming interim president and chief executive officer.

Roberts is currently the chief diversity, equity and inclusion officer at Arrowhead Consulting and has spent more than a decade working with chambers of commerce and businesses in Tulsa.

She specializes in partnering with CEOs, executives and leadership teams to deepen their personal and professional commitments to diversity, equity and inclusion.

Roberts will continue in her role at Arrowhead Consulting, as the two organizations will partner in resource development, marketing, and other strategic initiatives to benefit the chamber.

For full article read [here](#).



CALENDAR OF EVENTS



SEPTEMBER

SEPTEMBER 9: READING RALLY, LINDSEY HOUSE, 10:00-12:00 PM

SEPTEMBER 13-16: LCAM 2023, CHATTANOOGA, TN, 1:00 PM

SEPTEMBER 21: EWI OF TULSA MONTHLY CHAPTER MEETING

SEPTEMBER 22-23: INCOMING BOARD RETREAT

SEPTEMBER 27: EWI OF TULSA BOARD MEETING



REGISTER TODAY!
**LEADERSHIP CONFERENCE &
ANNUAL MEETING**

September 13-16, 2023

CHATTANOOGA^T_N

EVENTS TO ATTEND

SCHNAKE TURNBO FRANK INCLUSION & DIVERSITY SUMMIT

WHERE: Metro Technology Centers (1900 Springlake Dr., OKC)

WHEN: September 27, 2023 8:00 AM - 4:00 PM

WHO: C-suite executives, human resource directors, diversity officers and practitioners, departmental managers, regulatory and compliance officers, legal counsel, brand and marketing managers, multicultural affairs officers, purchasing and procurement managers, and anyone interested in inclusion, equity and diversity.

[Click here for more details!](#)

LINDSEY HOUSE PORCH PARTY

WHERE: Cain's Ballroom (423 N Main Street, Tulsa)

WHEN: October 5, 2023 6:00 - 11:00 PM

ATTIRE: Business casual &/or wedding attire appropriate

[Click here for more details!](#)

ANNOUNCEMENTS



WE WILL MISS YOU SAM!

Our Vice President/President-Elect, Samantha Schultz is moving back home to Wisconsin with her family. We wish her the very best!

JODY DAVIS PRESIDENT-ELECT

Jody Davis, Executive Representative for Accent Moving, Storage and Logistics will serve as incoming President for the 2023-2024 term



BIRTHDAYS & FIRM ANNIVERSARIES

SEPTEMBER BIRTHDAYS

September 2: Tascina Foster, Representative, TTCU Federal Credit Union

September 5: Gloria McQuade, Representative, Burnett Home Improvement

September 10: Tim McNulty, Executive, Warren Professional Building Corporation

September 13: Kim Bowman, Representative, T.D. Williamson

September 17: Dr. Steve Tiger, Executive, Tulsa Tech

September 22: Andrea Tucker, Representative, Merrill Lynch Wealth Management

September 23: Lou Winsworth, Sustaining, Public Service Company of Oklahoma

September 28: Briana Root, Representative, Tulsa Drillers

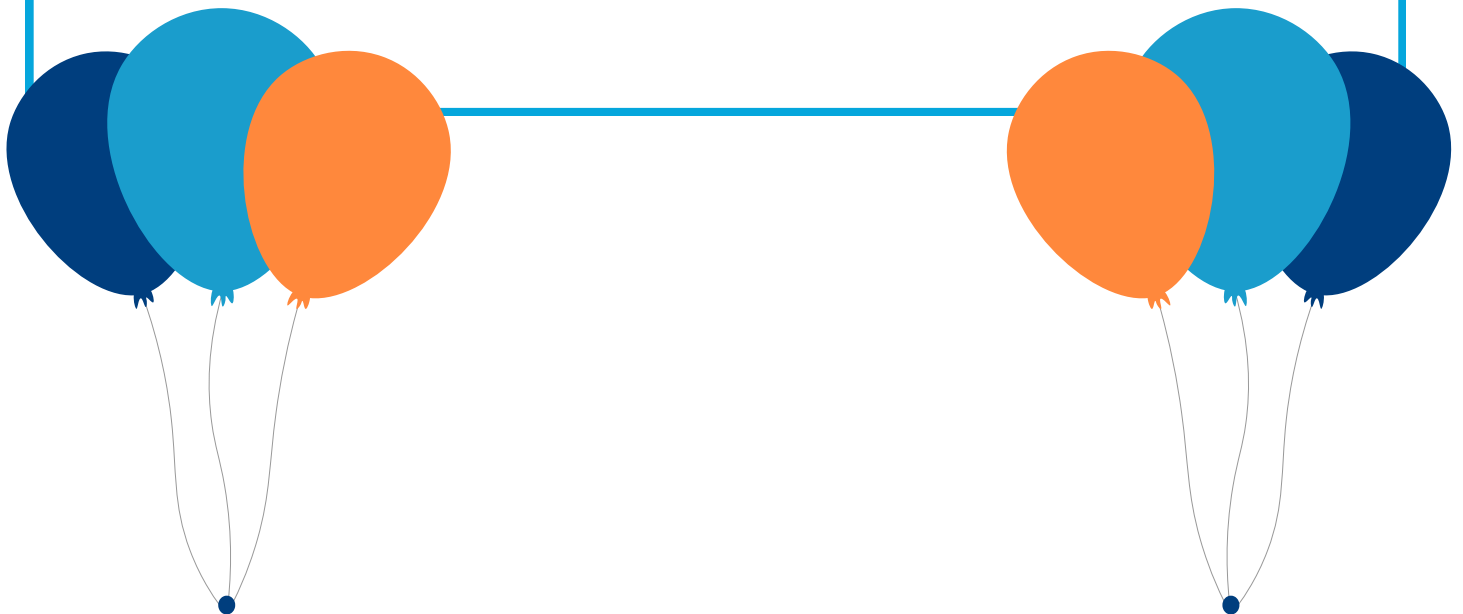
September 28: Sam Schultz, Representative, JPMorgan Chase & Co.

SEPTEMBER ANNIVERSARIES

September 1967: Dewberry

September 2001: Merrill Lynch Wealth Management

September 2003: Miss Helen's Private School



INFORMATION



DOOR PRIZES

Interested in donating a door prize for an upcoming meeting? Please contact Tamara Conner at tamara.conner@oneok.com

MENTORS

Have questions about who your mentor is? Reach out to Shari and she will help you out!

Shari L. Holdman, MBA
Executive Director, Arkansas & Oklahoma
Susan G. Komen
P: 918-221-8069 | C: 918-728-0492
sholdman@komen.org



NEWS & PHOTOS

Want your news or photos in the next Connect? Email a.everett@servproteamjones.com or peyton.s@polstontax.com

CONTACT

President

Tamara Conner, ONEOK, Inc.
tamara.conner@oneok.com
918-588-7902

Vice President

Sam Schultz, JPMorgan Chase & Co.
seschultz19@gmail.com
918-586-5203

Secretary

Elizabeth Bugay, Food Bank of Eastern Oklahoma
elizabethbugay@gmail.com
970-305-0279

Treasurer

Heather Stephen, Helmerich & Payne, Inc.
heather.stephen@hpinc.com
918-588-5709

Sergeant-at-Arms

Sara Shaklee, Trust Company of Oklahoma
sshaklee@trustok.com
918-899-2594

B/C/DP Director

Kelli Gernandt, Trust Company of Oklahoma
kgernandt@trustok.com
918-744-0553, 211

Membership (Recruitment)

Joni Whitehead, Anchor Search & Consulting LLC
joni@anchor-search.com
214-704-0169

Membership (Retention)

Tonya Solomon, ARC Document Solutions
tonya.solomon@e-arc.com
918-663-8100

Programs

Felicia Senter, Tulsa Tech
felicia.senter@tulsatech.edu
918-828-5007

Communications

Autumn Everett, SERVPRO of Tulsa County
a.everett@servproteamjones.com
405-590-4689

Peyton Shaffer (Interim)

peyton.s@polstontax.com
918-520-1167

Advisor

Lori Heerlyn, T.D. Williamson
lori.heerlyn@tdwilliamson.com
918-447-5085

Advisor

Judy Russell, ONEOK, Inc.
jrussell@oneok.com
918-588-7931

Advisor

Angie Walters, Schnake Turnbo Frank
angie@schnake.com
918-557-8916

Advisor

Janis Cohlmia, Tropical Plant Design
janis@tropicalplantdesign.com
918-622-3400



CONTACT US

ABOUT US

OUR VISION

TO ENHANCE PROFESSIONAL GROWTH AND DEVELOPMENT WITHIN A DIVERSE GROUP OF WOMEN WHILE EMPOWERING THEM TO MAKE A DIFFERENCE AS THEY INSPIRE OTHERS.

OUR MISSION

EWI BRINGS TOGETHER KEY INDIVIDUALS FROM DIVERSE BUSINESSES FOR THE PURPOSE OF:

- **PROMOTING MEMBER FIRMS**
- **ENHANCING PERSONAL AND PROFESSIONAL DEVELOPMENT, AND,**
- **ENCOURAGING COMMUNITY INVOLVEMENT**

OUR VALUES

INTEGRITY | EXCELLENCE | RESPECT | COLLABORATION

EWI

EWI OF TULSA IS A CHAPTER OF EXECUTIVE WOMEN INTERNATIONAL ("EWI"). IF YOU WANT TO KNOW MORE ABOUT EWI INCLUDING THE MANY DEVELOPMENT OPPORTUNITIES OR CONNECT WITH MEMBERS IN OTHER CHAPTERS, PLEASE TAKE THE TIME TO REVIEW THE [EWI CORPORATE WEBSITE](http://WWW.EWITULSA.ORG).