

Tulsa EWIConnect

CHARTERED 1956

OCTOBER 2023

LETTER FROM THE PRESIDENT

TAMARA CONNER | ONEOK, INC.

Dear EWI Tulsa Chapter Members,

As the leaves turn to vibrant hues of red and gold, and the crisp autumn air fills our days, I find myself reflecting on the journey we've embarked upon this year. Serving as your President has been a true privilege, and as October begins, it's time for me to bid farewell to this wonderful role.

Our theme for this year, "Bloom where you are planted," has been a guiding light for us all. It reminds us that regardless of the challenges or circumstances, we can thrive and grow. I've witnessed our organization embody this spirit, not just surviving, but truly flourishing.

One of the highlights of last month was our meeting, where we hosted a fantastic networking and trivia event. It was a night filled with laughter, camaraderie, and learning. Our members came together, shared their experiences, and connected on a deeper level. The trivia event, with its fun questions and competitive spirit, brought out the best in all of us. It was a testament to the strength of our community.

Serving as your President has been an incredibly rewarding experience. I have enjoyed every moment of it, from working with the dedicated board members to meeting and interacting with all of you. Seeing our organization grow and prosper under the theme of "Bloom Where You Are Planted" has been a source of pride for me.

As I step down from my role, I want to express my deepest gratitude for the trust you placed in me. It has been an honor to serve alongside such talented and passionate individuals. Together, we have nurtured a culture of growth, support, and resilience, and I have no doubt that this spirit will continue to thrive under the leadership of our incoming President, Jody Davis.

As we welcome the new season and new leadership, I encourage each of you to embrace the spirit of our outgoing theme, "Bloom where you are planted." Continue to nurture your personal and professional growth

*Bloom Where You
Are Planted*



2022-2023 OFFICERS & DIRECTORS

PRESIDENT

TAMARA CONNER | ONEOK, INC.

VICE PRESIDENT

SAM SCHULTZ | JPMORGAN CHASE & CO.

SECRETARY

ELIZABETH BUGAY | FOOD BANK OF EASTERN OKLAHOMA

TREASURER

HEATHER STEPHEN | HELMERICH & PAYNE, INC.

SERGEANT-AT-ARMS

SARA SHAKLEE | TRUST COMPANY OF OKLAHOMA

B/C/DP DIRECTOR

KELLI GERNANDT | TRUST COMPANY OF OKLAHOMA

MEMBERSHIP (RECRUITMENT)

JONI WHITEHEAD | ANCHOR SEARCH & CONSULTING, LLC

MEMBERSHIP (RETENTION)

TONYA SOLOMON | ARC DOCUMENT SOLUTIONS

PROGRAMS

FELICIA SENTER | TULSA TECH

COMMUNICATIONS

AUTUMN EVERETT | SERVPRO OF TULSA COUNTY
PEYTON SHAFFER (INTERIM) | POLSTON TAX

ADVISOR

LORI HEERLYN | T.D. WILLIAMSON

ADVISOR

JUDY RUSSELL | ONEOK, INC.

ADVISOR

ANGIE WALTERS | SCHNAKE TURNBO FRANK

ADVISOR

JANIS COHLMIA | TROPICAL PLANT DESIGN

Tulsa EWIConnect

CHARTERED 1956

OCTOBER 2023

LETTER FROM THE PRESIDENT CONTINUED

TAMARA CONNER | ONEOK, INC.

within our organization. Your contributions, enthusiasm, and dedication are the roots that sustain us and allow us to thrive.

Under Jody's leadership, we look forward to the fresh perspectives and opportunities her theme will bring to our organization. Together, we will embrace the present moment and seize every opportunity, knowing that we are here and together at the perfect time.

Thank you once again for allowing me the privilege of serving as your President this year. It has been an unforgettable journey, and I look forward to seeing the incredible ways in which our organization continues to bloom under the new leadership.

Wishing you all a vibrant and fruitful October.

Warmest regards,
Tamara Conner
President, EWI Tulsa Chapter

2022-2023 OFFICERS & DIRECTORS

PRESIDENT

TAMARA CONNER | ONEOK, INC.

VICE PRESIDENT

SAM SCHULTZ | JPMORGAN CHASE & CO.

SECRETARY

ELIZABETH BUGAY | FOOD BANK OF EASTERN OKLAHOMA

TREASURER

HEATHER STEPHEN | HELMERICH & PAYNE, INC.

SERGEANT-AT-ARMS

SARA SHAKLEE | TRUST COMPANY OF OKLAHOMA

B/C/DP DIRECTOR

KELLI GERNANDT | TRUST COMPANY OF OKLAHOMA

MEMBERSHIP (RECRUITMENT)

JONI WHITEHEAD | ANCHOR SEARCH & CONSULTING, LLC

MEMBERSHIP (RETENTION)

TONYA SOLOMON | ARC DOCUMENT SOLUTIONS

PROGRAMS

FELICIA SENTER | TULSA TECH

COMMUNICATIONS

AUTUMN EVERETT | SERVPRO OF TULSA COUNTY
PEYTON SHAFFER (INTERIM) | POLSTON TAX

ADVISOR

LORI HEERLYN | T.D. WILLIAMSON

ADVISOR

JUDY RUSSELL | ONEOK, INC.

ADVISOR

ANGIE WALTERS | SCHNAKE TURNBO FRANK

ADVISOR

JANIS COHLMIA | TROPICAL PLANT DESIGN

Tulsa ewiConnect

IN THIS PINK ISSUE

- [President's Letter](#)
- [October 12th Monthly Meeting](#)
- [September Chapter Meeting Highlights](#)
- [September Meeting Feedback](#)
- [September Board Retreat](#)
- [Member Spotlights](#)
- [Calendar of Events](#)
- [Events to Attend](#)
- [Announcements](#)
- [October Birthdays and Firm Anniversaries](#)
- [Information](#)
- [Contact](#)
- [About Us](#)



<https://www.facebook.com/ewitulsa/>



<https://www.linkedin.com/in/ewi-tulsa-1596791b9/>



<https://www.instagram.com/ewitulsa/>



https://twitter.com/EWI_Tulsa

OCTOBER MONTHLY MEETING



BUSINESS MEETING & INSTALLATION OF NEW OFFICERS FOR THE 2023-2024 TERM

OCTOBER CHAPTER BUSINESS MEETING & INSTALLATION OF OFFICERS AND DIRECTORS

Date: Thursday | October 12, 2023

Time: 5:30pm Social | 6:00pm Meeting

Venue: Station 13
3926 Charles Page Blvd.
Tulsa, OK 74127

Parking: Free Parking at the meeting location

Dress: Business

Cost: \$40.00 Members & Guests
\$30.00 Sustaining Members

> **RSVP by Friday, October 6th** so that we may provide the appropriate seating arrangements and dinner servings.
> *Please let us know if you have any dietary restrictions.*

October Breast Cancer Awareness Month

Please wear **PINK** or **BLACK** to the October meeting in a show of support to honor survivors and remember those lost to the disease.

No RSVP & No Shows to meetings will be invoiced so please be sure to respond to every chapter meeting invite.

Additionally, **Business Meeting fees** are mandatory for all members. While you will be invoiced regardless of attendance, please RSVP so we may prepare the appropriate amount of food & table settings. Thank you!

ATTENTION!!

LEADING LADIES WILL RESUME FOR THE 2023-2024 EWI YEAR! SEE THE CONNECT FOR DETAILS.

Please click [HERE](#) to connect to the RSVP form. We look forward to seeing you at the meeting!

Do you have a door prize you wish to donate? If so, please contact Tamara Conner at Tamara.Conner@oneok.com. As always, we appreciate your generosity.

SEPTEMBER CHAPTER MEETING HIGHLIGHTS



Felicia Senter, Tulsa Tech & Natalie Gilson, Momentum3



Pam Elmore, Miss Helen's Private School & Shari Holdman, Susan G. Komen



Susan Miller, Warren Professional Building Corporation, Kim Bowman, T.D. Williamson, & Guest, Osha Thompson



Guest, Sarah Bartlett, TherapyTown & Elizabeth Iobst, Helton Law Firm

SEPTEMBER MEETING FEEDBACK

THE FOOD

- Great variety
- Excellent
- P.F. Changs is always great!
- I love when we have P.F. Changs catered. Their food is always so delicious!!
- Fabulous meal!!

THE VENUE

- Such a great room
- Very nice. Great parking. Beautiful. Great size for the group. Thanks for using a microphone.
- Great room and parking.
- Beautiful room and great space to network.
- Good parking
- Need map with location of building.

THE PRESENTATION

- Great to get to know more members!
- It was so awesome to learn more about our members.
- It was a fun evening!
- Fun getting to know more about one another.
- Felicia - This is probably one of the best EWI meetings I have attended. You did an outstanding job creating this wonderful way for all of us to get to know each other and make us a more cohesive group. Thank you for a job very well done.
- I loved having a chance to learn more about fellow EWI members. It was a blast!
- It was so fun hearing about everyone's fun fact in learning about EWI.
- So much fun learning about our EWI sisters!!!
- It was great getting to know everyone better!

SEPTEMBER BOARD RETREAT



Sara Shaklee, Trust Company Oklahoma, Felicia Senter, Tulsa Tech, Judy Russell, ONEOK Inc., Peyton Shaffer, Polston Tax, Tamara Conner, ONEOK Inc., Janis Cohlma, Tropical Plant Design, Arquicia Franklin, Get Beyond, Jody Davis, Accent Moving & Storage, Susan Miller, Warren Professional Buidling Corp., Aubry Oehlberg, Firstar Bank, Dr, LaFonda Ehlers, Moore Funeral Homes, & Heather Stephen, Helmerich & Payne, Inc.



MEMBER SPOTLIGHTS

WELCOME DEBBIE STUMPS, PURVIEW LIFE

Debbie Stumps has served as Director of External Relations at Purview Life for the past 6 years. In this role, she collaborates with estate planning attorneys, trust officers, CPAs, financial advisors, and the healthcare community to ensure the well-being of their aging clients. She leverages her background in law and letters from the University of Oklahoma to excel in her current position.

Prior to Purview Life, Debbie gained over 10 years of healthcare and education experience in hospice.

Active in the Tulsa community, Debbie sits on the Board of the Tulsa Estate Planning Forum as Secretary. She also serves on the Board of the Broken Arrow Senior Center, as co-chair of the business development committee. She is also active in the Tulsa Downtown Rotary Club and the Tulsa Interagency Council.

Debbie has two daughters who are 30 and 28 years old and live in Philadelphia. Outside of work, Debbie enjoys spending time with family, traveling, cooking, and interior design.

WANT YOU AND YOUR BUSINESS TO BE SPOTLIGHTED?

Reach out to Peyton Shaffer!
Peyton.S@PolstonTax.com



CALENDAR OF EVENTS



OCTOBER



OCTOBER 12: EWI OF TULSA MONTHLY CHAPTER MEETING

OCTOBER 25: EWI OF TULSA JOINT BOARD MEETING

EVENTS TO ATTEND

LINDSEY HOUSE PORCH PARTY

WHERE: Cain's Ballroom (423 N Main Street, Tulsa)
WHEN: October 5, 2023 6:00 - 11:00 PM
ATTIRE: Business casual &/or wedding attire appropriate

[Click here for more details!](#)

TULSA WOMEN'S BUSINESS BREAKFAST

WHERE: 36 Degrees North (36 E Cameron St, Tulsa)
WHEN: October 19, 2023 9:00 - 10:30 AM
WHAT: A free event to help business owners and entrepreneurs meet one another, learn from community leaders, and become more informed about Tulsa's business ecosystem.

[Click here for more details!](#)

ANNOUNCEMENTS

THE LEADING LADIES ARE MAKING A COMEBACK!

The Leading Ladies program is coming back beginning
October 2023 – September 2024.

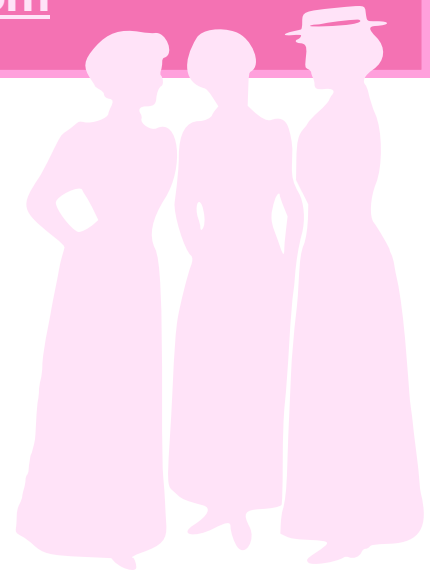
The Leading Ladies program is to honor all members
(Executive, Exec/Rep, Representatives, Individual, and
Sustaining Members) who attend all 12 meetings this EWI
year.

To qualify as a Leading Lady, you must attend every
monthly Tulsa Chapter meeting from beginning to finish.

(If you come late or leave early, it does not count)

All Leading Ladies will be recognized at the October 2024
Business and Installation Meeting.

Any questions can be directed to Jody Davis
jodydavis@accentmoving.com



BIRTHDAYS & FIRM ANNIVERSARIES

OCTOBER BIRTHDAYS

October 3: Virginia Cohlmia, Honorary

October 6: John Nicolaidis, Executive, Admiral Express Office Supply

October 11: Lynda Wingo, Executive, Miss Helen's Private School

October 19: Jessica Vagin, Representative, The Linden at Stonehaven Square

October 29: Angie Walters, Representative, Schnake Turnbo Frank

October 29: Sarah Bowen, Representative, Tulsa Zoo

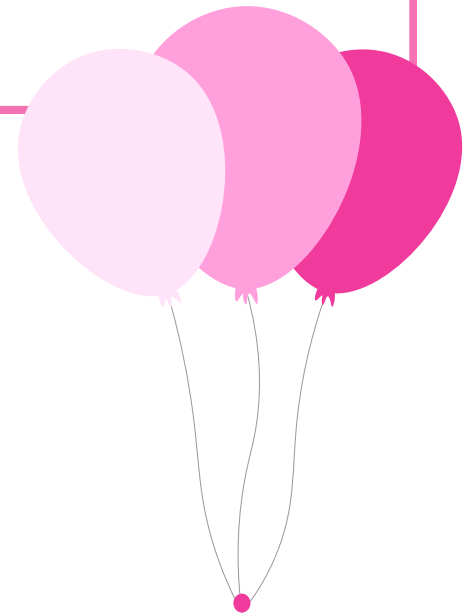
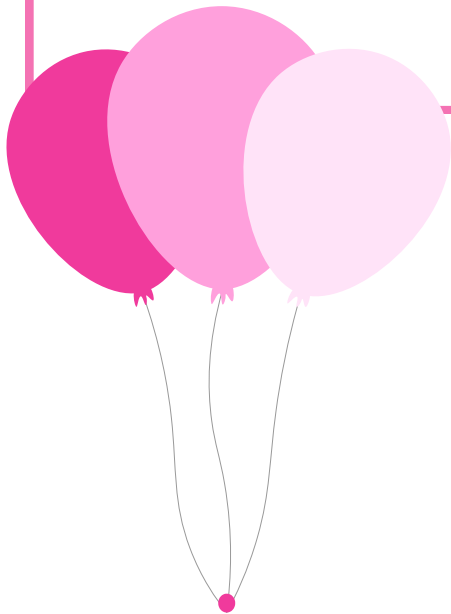
OCTOBER ANNIVERSARIES

October 2004: Don Nickels U.S. Senator, Sustaining

October 2011: Coterra Energy, Sustaining

October 2022: KMS International

October 2022: N2 Advertising



INFORMATION



DOOR PRIZES

Interested in donating a door prize for an upcoming meeting? Please contact Tamara Conner at tamara.conner@oneok.com

MENTORS

Have questions about who your mentor is? Reach out to Shari and she will help you out!

Shari L. Holdman, MBA
Executive Director, Arkansas & Oklahoma
Susan G. Komen
P: 918-221-8069 | C: 918-728-0492
sholdman@komen.org



NEWS & PHOTOS

Want your news or photos in the next Connect? Email a.everett@servproteamjones.com or peyton.s@polstontax.com

CONTACT

President

Tamara Conner, ONEOK, Inc.
tamara.conner@oneok.com
918-588-7902

Vice President

Sam Schultz, JPMorgan Chase & Co.
seschultz19@gmail.com
918-586-5203

Secretary

Elizabeth Bugay, Food Bank of Eastern Oklahoma
elizabethbugay@gmail.com
970-305-0279

Treasurer

Heather Stephen, Helmerich & Payne, Inc.
heather.stephen@hpinc.com
918-588-5709

Sergeant-at-Arms

Sara Shaklee, Trust Company of Oklahoma
sshaklee@trustok.com
918-899-2594

B/C/DP Director

Kelli Gernandt, Trust Company of Oklahoma
kgernandt@trustok.com
918-744-0553, 211

Membership (Recruitment)

Joni Whitehead, Anchor Search & Consulting LLC
joni@anchor-search.com
214-704-0169

Membership (Retention)

Tonya Solomon, ARC Document Solutions
tonya.solomon@e-arc.com
918-663-8100

Programs

Felicia Senter, Tulsa Tech
felicia.senter@tulsatech.edu
918-828-5007

Communications

Autumn Everett, SERVPRO of Tulsa County
a.everett@servproteamjones.com
405-590-4689

Peyton Shaffer (Interim)

peyton.s@polstontax.com
918-520-1167

Advisor

Lori Heerlyn, T.D. Williamson
lori.heerlyn@tdwilliamson.com
918-447-5085

Advisor

Judy Russell, ONEOK, Inc.
jrussell@oneok.com
918-588-7931

Advisor

Angie Walters, Schnake Turnbo Frank
angie@schnake.com
918-557-8916

Advisor

Janis Cohlma, Tropical Plant Design
janis@tropicalplantdesign.com
918-622-3400



CONTACT US

ABOUT US

OUR VISION

TO ENHANCE PROFESSIONAL GROWTH AND DEVELOPMENT WITHIN A DIVERSE GROUP OF WOMEN WHILE EMPOWERING THEM TO MAKE A DIFFERENCE AS THEY INSPIRE OTHERS.

OUR MISSION

EWI BRINGS TOGETHER KEY INDIVIDUALS FROM DIVERSE BUSINESSES FOR THE PURPOSE OF:

- **PROMOTING MEMBER FIRMS**
- **ENHANCING PERSONAL AND PROFESSIONAL DEVELOPMENT, AND,**
- **ENCOURAGING COMMUNITY INVOLVEMENT**

OUR VALUES

INTEGRITY | EXCELLENCE | RESPECT | COLLABORATION

EWI

EWI OF TULSA IS A CHAPTER OF EXECUTIVE WOMEN INTERNATIONAL ("EWI"). IF YOU WANT TO KNOW MORE ABOUT EWI INCLUDING THE MANY DEVELOPMENT OPPORTUNITIES OR CONNECT WITH MEMBERS IN OTHER CHAPTERS, PLEASE TAKE THE TIME TO REVIEW THE [EWI CORPORATE WEBSITE](http://WWW.EWITULSA.ORG).