

Tulsa EWI Connect

CHARTERED 1956

NOVEMBER 2023

LETTER FROM THE PRESIDENT

JODY DAVIS | ACCENT MOVING, STORAGE & LOGISTICS

EWI of Tulsa welcomed the 2023-2024 Board of Directors on October 11th at Station 13. It was a celebration of Tamara Conner and her board, all their accomplishments and hard work that left a strong foundation for our board to build on this coming year. It was a beautiful night that found us enjoying a fantastic outdoor reception before we moved into the 1933 event venue that was once a working fire station, complete with a refurbished 1936 fire truck.

Congratulations to the Tulsa chapter's new Board of Directors:
Vice President/President-Elect: Susan Miller, Warren Professional Building Corp.
Secretary: Arquicia Franklin, Get Beyond
Treasurer: Sara Shaklee, Trust Company of Oklahoma
Sergeant-at-Arms: Jessica Vagin, The Stonehaven
B/C/DP Director: Dr. LaFonda Ehlers, Moore Funeral Home, Inc
Membership-Recruitment Director: Shari Holdman, Susan G. Komen
Membership-Retention Director: Aubry Oehlberg, Firststar Bank
Program Director: Tinesa Siebert, The University of Oklahoma Foundation
Communications Director: Peyton Shaffer, Polston Tax Management Company
Board Advisors: Janis Cohlmlia, Tropical Plant Design/
Tamara Conner, ONEOK, Inc/Judy Russell, ONEOK, Inc/Felicia Senter, Tulsa Tech

These ladies have already started working to ensure we have a seamless transition of leadership. I have been so impressed by how they are each embracing their new role on the board.

The theme for this year: For Such A Time As This

For Such A Time As This....Lead with strength and integrity
For Such A Time As This....Develop leaders for a strong future
For Such A Time As This....Create a resilient bond of fellowship

The theme was elegantly woven throughout our evening, and it is already proving to be bigger than just a theme. I challenge each of you to find your EWI "For Such A Time As This" and I hope you will share it with us throughout this EWI year.

It was so exciting to see 65+ members at the October meeting! Due to the strong attendance numbers, we had a packed room, which created an electric atmosphere filled with conversation and connections. What a fantastic way to kick off our coming EWI year!



2023-2024 OFFICERS & DIRECTORS

PRESIDENT
JODY DAVIS ACCENT MOVING, STORAGE & LOGISTICS

VICE PRESIDENT
SUSAN MILLER WARREN PROFESSIONAL BUILDING CORP.

SECRETARY
ARQUICIA FRANKLIN GET BEYOND

TREASURER
SARA SHAKLEE TRUST COMPANY OF OKLAHOMA

SERGEANT-AT-ARMS
JESSICA VAGIN THE LINDEN AT STONEHAVEN SQUARE

B/C/DP DIRECTOR
DR. LAFONDA EHLERS MOORE FUNERAL HOMES

MEMBERSHIP (RECRUITMENT)
SHARI HOLDMAN SUSAN G. KOMEN

MEMBERSHIP (RETENTION)
AUBRY OEHLBERG FIRSTSTAR BANK

PROGRAMS
TINESA SIEBERT THE UNIVERSITY OF OKLAHOMA FOUNDATION

COMMUNICATIONS
PEYTON SHAFFER POLSTON TAX

ADVISOR
TAMARA CONNOR ONEOK, INC.

ADVISOR
FELICIA SENTER TULSA TECH

ADVISOR
JUDY RUSSELL ONEOK, INC.

ADVISOR
JANIS COHLMIA TROPICAL PLANT DESIGN

Tulsa EWIConnect

CHARTERED 1956

NOVEMBER 2023



2023-2024 OFFICERS & DIRECTORS

PRESIDENT

JODY DAVIS ACCENT MOVING, STORAGE & LOGISTICS

VICE PRESIDENT

SUSAN MILLER WARREN PROFESSIONAL BUILDING CORP.

SECRETARY

ARQUICIA FRANKLIN GET BEYOND

TREASURER

SARA SHAKLEE TRUST COMPANY OF OKLAHOMA

SERGEANT-AT-ARMS

JESSICA VAGIN THE LINDEN AT STONEHAVEN SQUARE

B/C/DP DIRECTOR

DR. LAFONDA EHLERS MOORE FUNERAL HOMES

MEMBERSHIP (RECRUITMENT)

SHARI HOLDMAN SUSAN G. KOMEN

MEMBERSHIP (RETENTION)

AUBRY OEHLBERG FIRSTAR BANK

PROGRAMS

TINESA SIEBERT THE UNIVERSITY OF OKLAHOMA FOUNDATION

COMMUNICATIONS

PEYTON SHAFFER POLSTON TAX

ADVISOR

TAMARA CONNOR ONEOK, INC.

ADVISOR

FELICIA SENTER TULSA TECH

ADVISOR

JUDY RUSSELL ONEOK, INC.

ADVISOR

JANIS COHLMIA TROPICAL PLANT DESIGN

LETTER FROM THE PRESIDENT CONTINUED

JODY DAVIS | ACCENT MOVING, STORAGE & LOGISTICS

I was truly overwhelmed at the number of past chapter presidents who attended to support this new board as we were installed. Linda Safley gave a moving inspiration and invocation that tied into "For Such A Time As This", it could not have been timelier. The legacy of our chapter runs long and deep, and we are truly blessed to have such a wonderful and active group of past presidents.

A big thank you to the following ladies who helped make this night a success: Eva Blair, TC Blair & Associates, Colleen Farris, Moody's Jewelry, Janis Cohlma, Tropical Plant Design, and our guest, Jessica Burns with Incredible Pizza for the door prizes.

Marie Stephens, Dare to Develop, wine sponsor.

Jamie Reed, ONEOK, Inc., the balloon arch.

Tonya Solomon, ARC Document Solutions, the programs, the new EWI event flag, and the check-in tablecloth.

Janis Cohlma, Tropical Plant Design, centerpieces.

Marnie Knight, Admiral Express, photographer.

The new Board Advisors for planning the whole amazing evening.

Please plan to attend the November 9th chapter meeting at Ti Amo's. You will have the opportunity to hear about the goals and vision for the coming year. Each director will give you information on how you can be involved in committees. Just remember....you get out of EWI what you put into EWI....I hope you find a place to belong! The success of the chapter is a collection of everyone finding their "For Such A Time As This".

Very Truly in EWI Service,
Jody

For Such
A Time
AS THIS

Tulsa ewiConnect

IN THIS ISSUE

- [President's Letter](#)
- [November 9th Monthly Meeting](#)
- [October Chapter Meeting Highlights](#)
- [October Meeting Feedback](#)
- [Member Spotlights](#)
- [Calendar of Events](#)
- [Events to Attend](#)
- [Announcements](#)
- [November Birthdays and Firm Anniversaries](#)
- [Information](#)
- [Contact](#)
- [About Us](#)



<https://www.facebook.com/ewitulsa/>



<https://www.linkedin.com/in/ewi-tulsa-1596791b9/>



<https://www.instagram.com/ewitulsa/>



https://twitter.com/EWI_Tulsa

NOVEMBER MONTHLY MEETING



NOVEMBER CHAPTER MEETING



Welcome to Committee Sign-Ups!
Please join us as we hear from the 2023-2024 Board Members, learn more about their Committees, and how each of us can be more involved in our chapter.

Theme: Bedlam
Date: Thursday, November 9, 2023
Time: 5:30 PM Social | 6:00 PM Meeting
Location: Ti Amo Ristorante Italiano - 6024 S Sheridan Rd A, Tulsa, OK 74145
Parking: Free parking available at the meeting location
Dress: Wear your favorite team colors!
Cost: \$45 Members & Guests | \$30 Sustaining

Please **click here** to connect to the RSVP form.

- RSVP by Friday, November 3rd so that we may provide the appropriate seating arrangements and dinner servings.
- Please let us know if you have any dietary restrictions.
- No RSVPs and no-shows to meetings will be invoiced! Please take the time to respond to each meeting invitation so we can bill you appropriately. If you are unable to attend a meeting, let SAA know 24 hours prior to the meeting to be removed from the count by emailing saawitulsa@gmail.com.

Do you have a door prize you wish to donate? If so, please contact Tinesa Siebert at tsiebert@ou.edu or Jody Davis at jodydavis@accentmoving.com. As always, we appreciate your generosity!

OCTOBER CHAPTER MEETING HIGHLIGHTS



President, Jody Davis, Accent Moving, Storage & Logistics



Marnie Choisnard, Health Zone Saint Francis & Colleen Farris, Moody's Jewelry



OCTOBER CHAPTER MEETING HIGHLIGHTS



Dr. LaFonda Ehlers, Moore Funeral Homes & President,
Jody Davis, Accent Moving, Storage & Logistics



OCTOBER CHAPTER MEETING HIGHLIGHTS



Janis Cohlma, Tropical Plant Design



Jeannie Murphy-Drake, Grimsley Janitorial Supplies & Teri Edmondson, Sustaining Member



EWI Tulsa Chapter Past Presidents



Kim Owens, The Bama Companies & Guest Creed Watson, President Jody Davis' Grandson

OCTOBER MEETING FEEDBACK

THE FOOD

- Orr is always consistent with quality.
- Catering by Orr is always very good.
- They consistently do a splendid job!
- Great meal & very well organized.
- The best food we have had this year, and we have had some good food.
- Orr always does a great job! Menu was excellent with lots of variety and the bread pudding topped it all off perfectly!
- Delicious as always

THE VENUE

- So thankful that we had so many ladies come! I know it was tight but it was still awesome!
- FANTASTIC outdoor space! Let's book this location again.
- Loved the venue
- Beautiful but tight! I loved the ambiance.
- It was a SUPER Cute space, however a little small for the number of people we had.
- Great atmosphere, just a bit too tight for as many as we had, but glad we experienced the space!
- Loved the FULL ROOM!!!! What a beautiful group of ladies!

THE PRESENTATION

- I'm very excited about the coming year. What a wonderful board
- This is always a special evening!
- I enjoyed hearing the bios for all the new officers.
- Celebrating the success of last year & a bright year ahead!
- I loved everything about it
- Looking forward to a fabulous year
- Great evening
- It was everything.

MEMBER SPOTLIGHTS



BRIANNA ROOT, TULSA DRILLERS

Brianna grew up in Bristol, CT, and earned a dual degree from Post University in Communications and Media Studies and Sports Management. She was a part of the volleyball and softball teams. Volleyball was always more of her strong suit, she was the starting freshman setter and was the captain her senior year for volleyball. Brianna has always loved Baseball and her senior year she applied to many Major League teams to work for them as her internship to graduate college. She ended up working for the operations department for the Baltimore Orioles. She spent 8 months there and was then hired part-time. A few months after working part-time she had the opportunity to go back to school to obtain her master's and play volleyball overseas at the University of Essex in Colchester, England. While there she attained her master's in management with a concentration in Marketing and played for the school team and a few pro teams in England. Fast Forward 8 months to COVID which put a wrinkle in everyone's lives. Brianna was living with her boyfriend, now fiancé in Massachusetts and she missed working in sports so applied for an internship with the Tulsa Drillers. Next thing they knew they were packing up and moved to Tulsa, Oklahoma where after Brianna completed a year-long internship, she finished another master's program online to earn her MBA (with a concentration in Leadership from Post University), and was hired on full-time with the Drillers and is now their Marketing Manager. Brianna and her Fiancé, Chris, live in Broken Arrow with their two cats Jack and Arya.

SARAH BOWEN, TULSA ZOO

Sarah was born and raised in Tulsa, OK, and attended Bishop Kelley High School. She took her passion for volleyball to the collegiate level playing four years at the University of Tennessee. Upon graduating with her BS in Marketing and Logistics, she was given the opportunity to do an internship with the Tennessee Athletic Department while earning her master's degree in Sports and Event Management. She returned home to Tulsa and began working at the Tulsa Zoo as the Special Events Coordinator in 2011 and was eventually promoted to Special Events Manager. For 10 years, Sarah oversaw all fundraising, donor, and member events for the zoo. In 2022, she switched roles to be the Executive Assistant to the President/CEO. With a love of planning and logistics, Sarah supports the executive team at the zoo and serves as board liaison. In her free time, Sarah likes to spend time with her husband Stephen and two sons, Sam (6) and Luke (4).



MEMBER SPOTLIGHTS



CONGRATULATIONS SHARI HOLDMAN, SUSAN G. KOMEN "50 MAKING A DIFFERENCE"

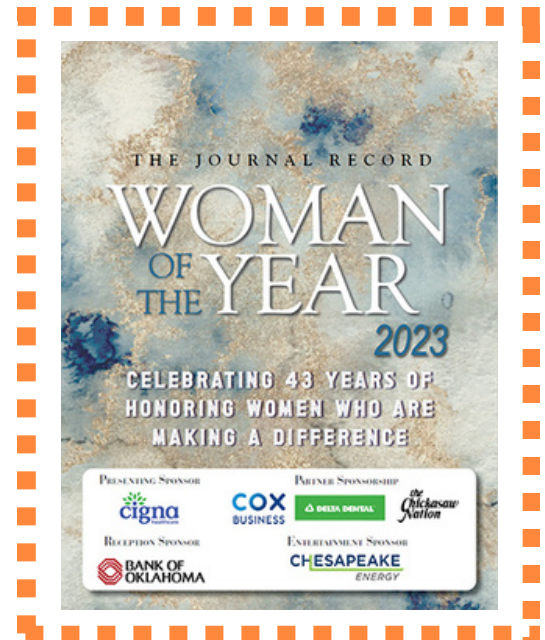
"Shari Holdman's positive attitude and 'we-can-do' anything mindset is infectious and has helped her succeed in the nonprofit community, said Monica Martin, Director of Development at the Tulsa Day Center for the Homeless. "It made you want to help her thrive," Martin said. "You would present a problem to her and without any hesitation she had the gift to bring a fresh set of eyes to the problem and solve it. She continues to this day to have this gift."

Since 2021, she has been Executive Director Arkansas & Oklahoma for Susan G. Komen, the organization that is focused on ending breast cancer by meeting needs in the community and investing in research to prevent and cure it."

The Journal Record celebrated Shari Holdman and 49 other honorees for 2023, they were honored by more than 500 attendees at a gala event on Thursday at the National Cowboy and Western Heritage Museum in Oklahoma City. The Woman of the Year program, now in its 43rd year, recognizes Oklahoma's prominent women who epitomize leadership in both their professional endeavors and in the communities where they live.

The "50 Making a Difference" publication and the Woman of the Year awards gala are a special tribute to Oklahoma's leading women. The publication includes full-page biographical portraits of the 50 honorees and acts as the program for the Woman of the Year black-tie event.

For full publication [click here](#).



CALENDAR OF EVENTS



NOVEMBER

NOVEMBER 9: EWI OF TULSA MONTHLY CHAPTER MEETING

NOVEMBER 15: EWI OF TULSA BOARD MEETING

NOVEMBER 16: EWI OF TULSA SHOP & SIP AT AMBER MARIE & CO



EVENTS TO ATTEND

AMBER MARIE & CO SHOPPING NIGHT

WHERE: Amber Marie & Company (4932 E 91st St, Tulsa)

WHEN: November 16, 2023 4:00 – 6:00 PM

WHAT: A 'Shop & Sip' event open to all friends, family, and coworkers! All proceeds will benefit the EWI of Tulsa Education Fund. The more that is purchased, the higher the percentage of return to our organization.

\$0-\$1000: 15% return, \$1000-\$3000: 20% return, \$3000 and above: 25% return.

Watch for sharable invite coming through email.

2024 PINK STILETTO GALA

WHERE: River Spirit Casino Resort (8330 Riverside Parkway, Tulsa)

WHEN: February 17, 2024 6:00 – 9:00 PM

WHAT: An event to honor local women who have used their platforms to promote breast cancer awareness

For more info reach out to Shari Holdman sholdman@komen.org or Tamara Connor, who is Chairing the event, at tamara.conner@oneok.com.

ANNOUNCEMENTS



LEADING LADIES IS BACK

You must attend all 12 meetings from start to finish to qualify as a leading lady! You will receive special recognition at the October 2024 business meeting and installation. We will begin posting the names of the Leading Ladies in the March Connect so you can follow along with who is in the running for this special distinction!

GET A JUMP ON YOUR CHRISTMAS SHOPPING!

Mark your calendars on November 16th from 4-6 PM, EWI of Tulsa will have a shop and sip at the 91st & Yale Amber Marie & Co. store. All proceeds will benefit the EWI of Tulsa Education Fund, a 501(c)(3). The more that is purchased, the higher the percentage of return to our organization.



AMBER MARIE & CO.

ANNOUNCEMENTS



MEETING FEE INCREASE

At the October Business Meeting, the new budget was approved with a slight increase in meeting fees that will go into effect at our November Meeting. Regular Meetings/Business Meetings/BCDP Banquet will now be \$45 each. Executive of the year will now be \$60. If you have prepaid your meeting fees, you will not be charged the increased amount until your renewal. There is no increase in meeting fees for our Sustaining Members.

Reminder that the July and October Business Meetings are required attendance, everyone is charged the meeting fee, per Section 5, Mandatory Business Meetings, Tulsa Chapter Standing Rules & Procedures.

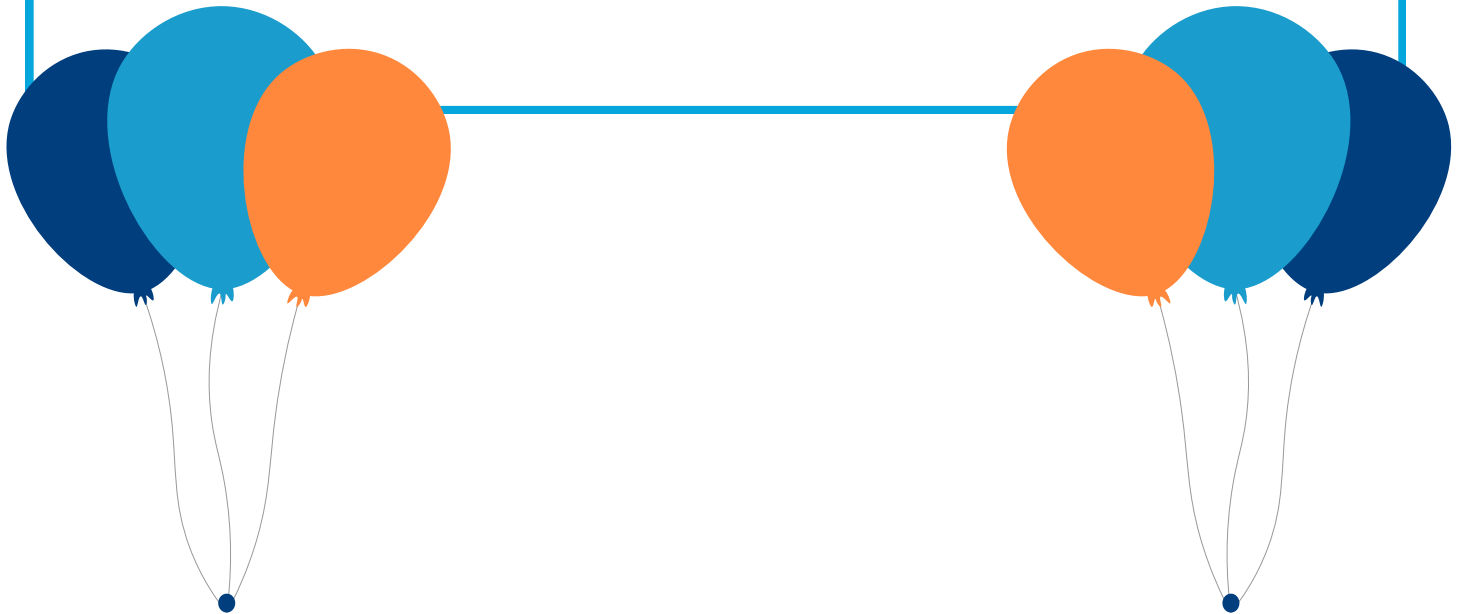
BIRTHDAYS & FIRM ANNIVERSARIES

NOVEMBER BIRTHDAYS

- November 5:** Pam Elmore, Representative, Miss Helen's Private School
November 5: Heather Stephen, Representative, Helmerich & Payne, Inc.
November 6: Shari Holdman, Executive/Representative, Susan G. Komen
November 6: Linda Safley, Sustaining
November 10: Amy Henderson, Representative, Tulsa Oilers
November 11: Pat Desormeau, Sustaining
November 16: Linda Polson, Sustaining
November 23: Becky Frank, Executive, Schnake Turnbo Frank
November 26: Ryan Kirk, Executive, JPMorgan Chase & Co.

NOVEMBER ANNIVERSARIES

- November 2010:** Warren Professional Building Corporation
November 2022: Grimsley Janitorial Supplies
November 2022: The Bama Companies



INFORMATION



DOOR PRIZES

Interested in donating a door prize for an upcoming meeting? Please contact Tinesa Siebert at tsiebert@ou.edu or Jody Davis at jodydavis@accentmoving.com.



MENTORS

Have questions about who your mentor is? Reach out to Aubry Oehlberg and she will help you out!
aohlberg@firststar-bank.com



NEWS & PHOTOS

Want your news or photos in the next Connect?
Email peyton.s@polstontax.com



LIFE EVENTS

If you are having any life events that you wish to share with the chapter, please send them to Jessica Vagin at Jessica.vagin@legendseniorliving.com. We want to make sure the chapter leadership and membership are kept informed of important happenings and are reaching out to support you! It is important to your Board of Directors that we celebrate your personal and professional accomplishments but also offer care and support in the event of surgery, illness or loss.

CONTACT

President

Jody Davis, Accent Moving, Storage & Logistics
jodydavis@accentmoving.com
918-671-5302

Vice President

Susan Miller, Warren Professional Building Corp.
smiller2@saintfrancis.com
918-481-7953

Secretary

Arquicia Franklin, Get Beyond
arquicia.franklin@getbeyond.com
918-691-7148

Treasurer

Sara Shaklee, Trust Company of Oklahoma
sshaklee@trustok.com
918-899-2594

Sergeant-at-Arms

Jessica Vagin, The Linden at Stonehaven Square
jessica.vagin@legendseniorliving.com
918-955-4149

B/C/DP Director

Dr. LaFonda Ehlers, Moore Funeral Homes
lehlers@moorefuneral.com
918-744-1202

Membership (Recruitment)

Shari Holdman, Susan G. Komen
sholdman@komen.org
918-728-0492

Membership (Retention)

Aubry Oehlberg, Firststar Bank
aoehlberg@firststar-bank.com
918-853-2654

Programs

Tinesa Siebert, The University of Oklahoma
Foundation
tsiebert@ou.edu
918-645-3080

Communications

Peyton Shaffer, Polston Tax
peyton.s@polstontax.com
918-520-1167

Advisor

Tamara Conner, ONEOK, Inc.
tamara.conner@oneok.com
918-588-7902

Advisor

Judy Russell, ONEOK, Inc.
jrussell@oneok.com
918-588-7931

Advisor

Felicia Senter, Tulsa Tech
felicia.senter@tulsatech.edu
918-406-6106

Advisor

Janis Cohlma, Tropical Plant Design
janis@tropicalplantdesign.com
918-622-3400



CONTACT US

ABOUT US

OUR VISION

TO ENHANCE PROFESSIONAL GROWTH AND DEVELOPMENT WITHIN A DIVERSE GROUP OF WOMEN WHILE EMPOWERING THEM TO MAKE A DIFFERENCE AS THEY INSPIRE OTHERS.

OUR MISSION

EWI BRINGS TOGETHER KEY INDIVIDUALS FROM DIVERSE BUSINESSES FOR THE PURPOSE OF:

- **PROMOTING MEMBER FIRMS**
- **ENHANCING PERSONAL AND PROFESSIONAL DEVELOPMENT, AND,**
- **ENCOURAGING COMMUNITY INVOLVEMENT**

OUR VALUES

INTEGRITY | EXCELLENCE | RESPECT | COLLABORATION

EWI

EWI OF TULSA IS A CHAPTER OF EXECUTIVE WOMEN INTERNATIONAL ("EWI"). IF YOU WANT TO KNOW MORE ABOUT EWI INCLUDING THE MANY DEVELOPMENT OPPORTUNITIES OR CONNECT WITH MEMBERS IN OTHER CHAPTERS, PLEASE TAKE THE TIME TO REVIEW THE [EWI CORPORATE WEBSITE](http://WWW.EWITULSA.ORG).