

Letter from President



Happy February! I hope January was a good month for you and that you took time to consider your potential for a great year in 2009. January was a busy time of planning for our Chapter, and I can't wait to experience the exciting events being prepared for us! Based on what I've seen from our committees thus far, 2009 promises to be a trail-blazing year for the Tulsa Chapter!

The Tulsa Chapter is very fortunate to have so many strong leaders and a rich heritage of tradition in EWI. Many of our newer representatives have stepped up to the plate to take leadership roles and they bring with them new excitement, enthusiasm, and fresh ideas. Our strong contingent of seasoned representatives is embracing and supporting those new ideas, injecting words of wisdom from past experience, and helping keep our focus on the core values and objectives of EWI. What an awesome team!

Remember, though – the Tulsa Chapter “Team” includes all of us! Make every effort to attend committee meetings and volunteer to help whenever you can. Even though most of us have calendars with very few empty spaces, we can still accomplish great things in EWI if we each take on a small task or two. You will gain a much greater feeling of accomplishment and pleasure from a successful outcome when you have a part in making it happen!



IN THIS ISSUE

Letter from President	1
Meeting Notice	2
EWI Vision	2
Local Board	2
Communications	3
Firm Spotlight	4
January Meeting	4
Board Reports	5
EWISP Recap	6
In the News	6
Save the Date	6
Announcements	6



“The greatest science in the world, in heaven and on earth, is love.”

~ Mother Teresa, Christian missionary and winner of the Nobel Peace Prize

Meeting Notice

Verizon Wireless Firm Night

- When:** **Thursday, February 12, 2009**
 5:30 pm Check-in/Registration
 6:00 pm Welcome & Introduction of Guests
 6:10 pm Invocation/Dinner
 7:00 pm Wireless Wisdom: Understanding new
 Technology in 2009 *(Everything you always
 wanted to know but were afraid to ask!)*
 Presented by Jason Alford, EWI
 Executive for Verizon Wireless
 8:00 pm Closing Remarks
- Dress:** Business or Business Casual
- Where:** Copeland's Famous New Orleans Restaurant
 3320 W Kenosha St., Broken Arrow – 252-2673
- Cost:** \$40.00
- RSVP:** By Noon, Friday, February 6, 2009
- Respond To:** Maureen Quinn, Oklahoma Manufacturing Alliance
 592-0722 – telephone or 592-1417 fax
 maureen@okalliance.com
- Meeting Fees:** Make checks payable to EWI, Tulsa Chapter.
 Fees may be paid at the door or mailed to:
 Alandra Baggett
 Omni Air International
 3303 North Sheridan Road, Hangar 19
 Tulsa, OK 74115

LOCAL BOARD

Janet Mallow, President
 Riggs, Abney, Neal, Turpen, Orbison &
 Lewis (669-8984)

**Jessica Bolen,
 Vice President/President Elect**
 Montereau in Warren Woods
 (491-5204)

Alandra Baggett, Treasurer
 Omni Air International (831-3020)

Karen Kellogg, Secretary
 JP Morgan Chase & Co. (586-5434)

Maureen Quinn, Sergeant-at-Arms
 Oklahoma Manufacturing Alliance
 (592-0722)

Janis Cohlmia, B/C/DP
 Tropical Plant Design (691-6067)

Janice Morgan, Membership
 Alzheimer's Association (481-7440)

Karen Johnson, Program
 Tulsa Technology Center (828-5206)

Jennifer Prout, Publication
 Verizon Wireless (504-9050)

Lesla Johnson, Ways & Means
 The Pepsi Bottling Group (445-8005)

EWI® Mission and Vision

Mission

Executive Women International® is an organization which brings together key individuals from diverse businesses for the purpose of:

- Promoting member firms
- Enhancing personal and professional development, and
- Encouraging community involvement

Vision

To be the Leading Connection for Business Professionals.



Heart Walk – April 18th

The American Heart Association's 25th Annual Heart Walk will be Saturday, April 18th. The festival begins at 8:00 am at Veteran's Park; walk begins at 8:30 am.

There will be an estimated 4,000 people walking the 3-mile route through Cherry Creek Trails, over the Arkansas River and down the West Bank and back into Veteran's Park.

The festival consists of some healthy foods, educational information, health screenings, rock climbing wall, as well as a Kid Zone with Jupiter Jump, face painting, and clowns.

Bring your dogs to visit our Pet Zone where they will be treated to treats and hydration before and after their 3-mile walk.

If you and/or your company are interested in participating with us on April 18th in the fight against heart diseases and stroke, please call or email Nancy Hillman, Heart Walk Director with the American Heart Association, at 712-4005 or nancy.hillman@heart.org.

Leading Ladies

"Leading Lady" is a designation given to those Representatives who have been present at each monthly meeting from the "First Hello to the Final Farewell."

Since we are in our first few months, at this point, almost everyone is a Leading Lady! We will begin listing the Leading Ladies in the next couple of months.

Directory Updates

Please provide any updates for the Tulsa Chapter Directory to Maureen Quinn, Oklahoma Manufacturing Alliance. Call 592-0722; fax 592-1417; or email maureen@okalliance.com.



EWI Corporate Updates

www.executivewomen.org

Check your member information on the corporate website and update your profile online.



Share the News



Have an item you would like to share with the EWI Membership (event, celebration, job opening, or EWI discount you offer)? Please let us know.

Send submissions for the Chapter Connect to:

lstansill@usbeefcorp.com

610-2226

Submission deadline is the 20th of each month.

In The Spotlight



Linda Polson, Marketing Coordinator for PSA-Dewberry, presented an overview of the architectural and engineering services provided by her firm since it was established in Oklahoma in 1942. PSA-Dewberry is part of the Dewberry Companies, which is comprised of a total of 1,955 employees in 34 locations in 17 states. Her presentation included showing some of the images of recently completed projects in the Tulsa area. The highlighted projects included Helmerich Advanced Technology Research Center, Cancer Treatment Centers of America, and Hutcherson Family YMCA.



President Janet Mallow spoke briefly about her experiences with "Going Green" before introducing our speaker.



It may have been cold outside, but inside, members enjoyed a fun and cozy atmosphere.



Michael Patton shared his passion for recycling which began when he was a child.

The January 2009 Chapter Meeting started our year in a festive way. Despite the frigid temperatures, our Tulsa Chapter Representatives came out in full force to enjoy the cozy atmosphere and spicy menu of Los Cabos. Following the wonderful meal and lively conversation, Michael Patton, Executive Director of Tulsa Metropolitan Environmental Trust, shared his passion for recycling and provided a very informative overview of steps we can take to participate in recycling efforts. For more information on recycling in Tulsa, visit the Tulsa MET website at www.metrecycle.com.

Thank you to Karen Johnson, Tulsa Technology Center, and the members of the Program Committee for putting together this fun and informative program.

January Membership Report

New First Representatives:

- Nancy Hillman, American Heart Association
- Susan McCoy, Tulsa Technology Center
- Jeannie Winton, State Farm Insurance Cos.

New Second Representatives:

- Teri Edmondson, The William K. Warren Foundation
- Amie Schlosberg, Linde Process Plants, Inc.

New Executive:

- Mandy Leemhuis, American Heart Association

Firm Resignations:

- Simple Simon's Pizza
- Cimarex Energy Co.
- SpiritBank

First Representative Resignations:

- Nancy Gordin, Tulsa Technology Center
- Nancy Chambers, Simple Simons Pizza
- Teri Edmondson, Leucadia National Corporation
- Dana Bennetch, Cimarex Energy Co.
- Kathy Eskridge, State Farm Insurance Cos.
- Pat Levering, SpiritBank

Executive-Representative Resignation:

- Mandy Leemhuis, American Heart Association

Executive Resignations:

- B. J. Dumond, Simple Simon's Pizza
- Elaine Dishman, SpiritBank
- Kimberly Hardesty, Cimarex Energy Co.

Co-Executive Resignation:

- Becky Dumond, Simple Simon's Pizza

Firms without Representatives/Executives:

- New York Life Insurance Company

February Birthdays

Executives

Date	Name	Company
12	Henry Zarrow	Zarrow Family Office, LLC
24	Ernest Moody	Moody's Jewelry Inc.

Representatives

Date	Name	Company
2	Karen Kellogg	JPMorgan Chase & Co.
4	Maureen Quinn	Oklahoma Manufacturing Alliance
8	Kim Treadway	Dodge Chrysler Jeep of Tulsa
13	Diane Jarvi	Osteopathic Founders Foundation
16	Glenda Stoner	Hilti, Inc.
20	Tammie Blessing	JPMorgan Chase & Co.
24	Sherrel Evans	The Flintco Cos., Inc.
25	Tami Smith	Tulsa Technology Center

Firm Anniversaries

Year	Company
1972	Tulsa Metro Chamber
1973	Zarrow Family Office, LLC
1986	Mid-America Land, Grain & Cattle Co., Inc.
1992	Hilti, Inc.
1997	U.S. Beef Corp. (Arby's)
1997	The William K. Warren Foundation
2006	Cox Business Services
2007	Verizon Wireless

Treasurer's Report

The GENERAL OPERATING ACCOUNT
as of December 31, 2008, was \$14,415.02.

Websites

Tulsa Chapter Website: www.ewitulsa.org

Corporate Website: www.executivewomen.org



January Attendance

1 st Representatives	36
2 nd Representatives	5
3 rd Representatives	1
Executive/Representatives	2
Sustaining Representatives	5
Life Members	1
Guests	9
Executives	1
Total	58



EWISP Breakfast Recap

The 2009 Tulsa Chapter EWISP program officially kicked off on January 21 with the EWISP Breakfast held at Tulsa Technology Center. The EWISP students, their advisers and EWI Chapter Mentors were treated to a tasty meal, and the students received some very valuable advice from John Hamill, Honorary Member of the Tulsa Chapter, and former EWISP judge at the local, regional and international level. Thank you to John for again sharing his wisdom with the students, and thank you also to Janis Cohlma, Tropical Plant Design, and the members of the EWISP Committee for your hard work on putting together this successful event.

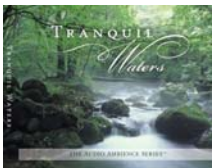


In the News

Cheryl Benoit, Representative for Moore Funeral Home, recently shared this great news!

The piano has been a passion of mine since I was 5 years old. In July of 2007, that passion evolved to a new level in my home studio, Tranquil Waters Music, LLC. While I have released 18 CDs through my own website, I wanted to share my excitement that Hobby Lobby is releasing a 2 disc compilation CD of mine called "Tranquil Waters" as part of their Ambient Sound Series. Since January 28, 2009, my music is available in 411 stores nationwide!

I'm also proud to say that my member firm, Moore Funeral Home, Inc., has shown their support by using my music as well. A special thank you to all the EWI ladies who have given me so much encouragement throughout my journey!

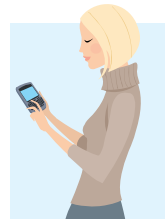


Congratulations, Cheryl!!!

What comprises a Courtesy Notice?

Do you have news that you would like to share with the membership, such as births, deaths, illnesses, or even a job promotion? Maybe there is a job opening at your firm and you want to network it. Courtesy Function Leader, Diane Cariker, sends that information to all Tulsa Reps via a "Courtesy Notice."

Please send your news to Diane at dcarike@tulsalibrary.org.



"Save the Date"

September 24-26, 2009

2009 Leadership Conference and Annual Meeting Louisville, Kentucky

The 2009 Leadership Conference and Annual Meeting will be here before you know it. Please mark the dates on your calendar, and begin planning to attend.

