

Letter from President



Happy Holidays EWI of Tulsa®! The decorations are hung, the shopping has started, and the schedule is full with one festive gathering after another. During this busy time of year, I encourage everyone to enjoy the time with your friends and family over the holiday season. I am thankful for the opportunities we enjoy in EWI. The **Connections** we make

will last a lifetime. Thank you to our members for making the November 12, 2009, **Pretty in Pink – Breast Cancer Awareness Forum** dedicated to Julia Moore, 1993 Chapter President, a special night to remember. I was pleased to have prospective members in attendance at the **Tulsa Community College's** Center for Creativity. The evening began with a presentation by **Dr. Flo Ella Potts, TCC Provost**, during the firm spotlight.

The room was beautifully decorated in pink with unique hats on each table. I recognize **Stephanie Layson, Party Pro Rents**, for providing the exquisite pink table covers and **Janis Cohlma, Tropical Plant Design**, for procuring the hats from our members. I would like to express my gratitude to **Myra Trahern, Life Member**, for providing a special invocation to begin the evening. **Tulsa Community College, Ihloff Salon & Day Spa, and Tropical Plant Design** graciously donated prizes for our guests.

Most of all, thank you our wonderful speakers: **Angie Walters**, EWI representative for **Tulsa Metro Chamber** who also represented the Breast Cancer Assistance Program; Sandy Lewis and Amy Wyatt, Tulsa Project Women; and Julie Sluss, Saint Francis RN Breast Health Navigator. Together they presented an educational program on Breast Cancer Awareness as well as detailing the assistance our community offers to those diagnosed with the disease. Thank you to the Program Committee led by **Bassima Roz, Tulsa Marriott Southern Hills** and the Membership Committee led by **Nicki Boone, Tulsa Renaissance Hotel and Convention Center**, for teaming up on this event.

Thank you to **Diane Jarvi, Osteopathic Founders Foundation**, for providing the photos for the slideshow and memory board.

Community will be the focus of this month's business meeting on December 10, hosted by **Gatesway Foundation** at the Bella Gardens Wedding Chapel and Banquet Facility. Community can be defined as a unified group of individuals with similar interests. EWI of Tulsa is just that. During the Reading Rally this fall, we united to donate over 600 books to the Children's Hospital at Saint Francis. Our membership will come together again to purchase gifts for the Gatesway Foundation participants to be presented at the December meeting. I appreciate **Teri Edmondson, The William K. Warren Foundation**, for coordinating the gift program.

I look forward to seeing you all there as we enjoy fabulous fellowship and entertainment. What better way to start the holidays than with your EWI family?

Yours very truly in EWI Service,

Jessica Bolen

"You will not discover your greatness by emulating someone else. You will only know your greatness by being who you are" – Kathleen Gage

IN THIS ISSUE

Letter from President	1
Meeting Notice/Local Board	2
Board Reports	3
Leading Ladies	3
Getting to Know You...	4
All About The Academy of Leadership	5
Misc. Announcements	5
Meeting Highlights	6 & 7
Committee Updates	8
In Loving Memory...	8
Dates to Remember	9
Vision & Mission	9



~*~Official Notice~*~

Notice is hereby given that the December Business/Philanthropy Meeting will be held Thursday, December 10, 2009 at Bella Gardens Wedding Chapel & Banquet Facility – 17207 E. 21st

Jessica Bolen, President

Janice Morgan, Secretary

EWI of Tulsa ® December 2009 Meeting

Business Meeting & Philanthropy

- When:** Thursday, December 10, 2009
- 5:30 pm Check-in & Registration
6:00 pm Welcome, Invocation, & Dinner
7:00 pm Business Meeting
8:00 pm Closing Remarks—Jessica Bolen, President
- Dress:** Business/Business Casual
- Where:** Bella Gardens Wedding Chapel & Banquet Facility
17207 East 21st, Tulsa
(Directions to follow, prior to meeting)
- Cost:** \$40.00 – Members
- RSVP:** By Noon, Friday, December 4
- Respond to:** Kim Bowman, T. D. Williamson, Inc.
Phone 447-5044; Fax 447-5050
kim.bowman@tdwilliamson.com
- Meeting Fees:** Make checks payable to EWI of Tulsa. Pay at the door or mail to Alandra Baggett at Omni Air International, 3303 North Sheridan Road, Hangar 19, Tulsa, 74115.

LOCAL BOARD

Jessica Bolen, President
Monterea (491-5204)

Janis Cohlma,
Vice President/President Elect
Tropical Plant Design, Inc. (691-6067)

Alandra Baggett, Treasurer
Omni Air International (831-3020)

Janice Morgan, Secretary
Alzheimer's Association (481-7740)

Kim Bowman, Sergeant-at-Arms
T. D. Williamson, Inc. (447-5044)

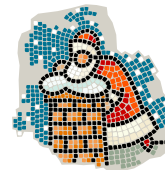
B/C/DP
Vacant

Nicki Boone, Membership
Renaissance Tulsa Hotel & Convention
Center (307-4017)

Bassima Roz, Program
Tulsa Marriott Southern Hills (523-3552)

Tammie Blessing, Publication
JPMorgan Chase & Co. (586-5828)

Lesia Johnson, Ways & Means
The Pepsi Bottling Group (445-8005)



“They err who think Santa Claus comes down through the chimney; he really enters through the heart.” ~ Mrs. Paul M. Ell



Board Reports

November Membership Report

Firm Resignation:

Just Around the Corner Antiques

Representative/Executive Resignation:

Lori Hart, Just Around the Corner Antiques

New Executives:

David Riesen, Owner, Oklahoma Mailing Equipment

Paul Landaiche, Director, Merrill Lynch

Executive Resignations:

Andy Smith, Oklahoma Mailing Equipment

Ron Green, Merrill Lynch

Firm Posting for Membership

Bella Gardens Wedding Chapel and Banquet Facility

17207 E. 21 St., Tulsa, OK 74134

437-9424

(Probable) Executive - Laurie Price

Representative – Laurie Price

Major: Consumer Merchandising and Service

Minor: Wedding Counselor

November Attendance

First Representatives	37 *
Second Representatives	2
Third Representatives	1
Executive/Representatives	2
Sustaining Representatives	8
Life Members	2
Guests	23
Executives	<u>1</u> **
Total	75

* The First Representative count does not include Executive/Representatives. For total first representative count, add the first representative and the Executive/Representative together.

**Executive count does not include Executive/Representatives. For total Executive count, add the Execs and Exec/Reps together.

December Birthdays

Executives

Date	Name	Company
09	Mike Neal	Tulsa Metro Chamber
14	Stephan Meier	Doubletree Hotel Downtown
19	Judi Myers	Gatesway Foundation
29	Greg Entwistle	Stanfield & O'Dell

Representatives

Date	Name	Company
01	Betty Oswald	Sustaining
06	Rosemary Gaffey	Sustaining
06	Mary Wade	Schnake Turnbo Frank PR
16	Kim Grayson	The Rowland Group
17	Gene Callahan	Honorary
25	Judy Russell	ONEOK, Inc.
25	Myra Trahern	Life
26	LaQuinda Davison	Gatesway Foundation
27	Vernice Bersche	Merrill Lynch
29	Jan Ehrle	Mid-America Land, Grain & Cattle, Co.
30	Roberta Montgomery	Helmerich & Payne, Inc.

Firm Anniversaries

Year	Company
1994	Anchor Stone
2006	Omni Air International
2008	The Rowland Group

Treasurer's Report

The GENERAL OPERATING ACCOUNT
as of October 31, was **\$21,392.68**

Leading Lady

"Leading Lady" is a designation given to those Representatives who have been present at each monthly meeting from the "First Hello to the Final Farewell."

Since we're still early in the EWI year, almost everyone is a Leading Lady! We will start listing the Leading Ladies in January—I hope to see your name listed here!



Getting to know you....



Melanie Dennis
Omi Air International

Melanie is a local girl, born in Tulsa. She has one sister who is four years older. A favorite memory of childhood involves the summer vacations her family took to theme parks like Six Flags Over Texas, Silver Dollar City, or other similar destinations. Truly a family affair, they would be joined by her aunt, uncle, and cousins, and they had a great time. So much so, that even the rides to get there were an integral part of the fun!

With such a great family connection, it's no surprise that she credits her parents' influence for instilling the importance of family, honesty, and hard work. Teachers in elementary and junior high also get the early formative nod for encouraging her to work hard to reach her goals. Currently working as a staff accountant with Omni Air, she loves her job where she is challenged but not overloaded. The fact that she counts her co-workers as good friends is a great benefit.

Melanie enjoys scrapbooking and reading...so much so that when she has a bit of free time, it's hard for her to decide which to do. Her own little family includes her husband Steve, their son Connor, and Daisy, the family's wheat-colored Cairn Terrier. Daisy could be the poster pup for pet rescue...they got her two years ago and she has become a HUGE part of their lives. Like many of ladies, Melanie would love to travel, for either business or pleasure. Given who she works for, she may just have a chance at that!



Sally Shelton
Senior Star Living

Sally was born in Tulsa, but lived a stone's throw away in Cleveland, and has one brother who is 8 years older. Her favorite thing about childhood was getting to ride horses. Fortunate that her grandparents lived only two blocks away, she delighted in the times that her grandpa would pick her up and take her "out to the farm" where she got to see the cows and ride the horses. Her mother had quite an influence on Sally's life and gifted



her with a positive attitude, imbuing in her the philosophy of "this too shall pass" for when she would face hard times. Sally absolutely loves her job, a fact that's immediately evident when you chat with her for any length of time. Definitely not your usual 8-to-5, she feels blessed to do work to help make a difference in the lives of "Seniors." Sally says she doesn't have a job—more a deeply-seated sense of purpose.

A recent competitor at the 2009 Tulsa Run and frequent 5K participant, Sally has a goal of competing in a marathon one day. When she's not running, she enjoys spending time with her husband Brad, and their children Shelby and Blake. They have two pets, Roxy the chocolate Lab and Bella the Chihuahua. With all that she does, it sounds like Sally will be able to get in some of the marathon training just keeping up with herself!



LaQuinda Davison
Gatesway Foundation

Another Tulsa girl, LaQuinda comes from a large family that includes four sisters and one brother. She loved playing outside as a child and recalls never having to worry about the problems all our children seem to experience today. She remembers fondly how everyone cared about their neighbors.

LaQuinda greatly admires her mother—a single mother of six—who taught her the importance of hard work, perseverance, and how to treat others the same way she would want them to treat her. LaQuinda feels very fortunate to work in an industry where she can have an impact on some of society's most vulnerable population.

Even in her personal life, her work ethic bleeds over into her passion—LaQuinda tries to leave a positive impact on everyone she comes in contact with throughout her life's journey. Looking ahead, she really hopes her journey includes a vacation to Hawaii with her husband...and a paid-off home.



Academy of Leadership

The Academy of Leadership is composed of distinct courses or workshops which develop leadership skills to their full potential. Each course fosters principle-focused leadership through the use of research, best practices, behavioral models, and support.

The Academy of Leadership embraces a three-fold philosophy:

1. Leadership can and must be taught;
2. Everyone possesses leadership potential;
3. There are excellent examples of leadership within EWI.



This philosophy is the foundation for the entire Academy of Leadership program, including all speakers, activities, and information presented at each course.

The completion of any three Academy of Leadership courses by July 1 is a prerequisite to attend The Leadership Experience at LCAM and join the Academy of Leadership Alumni. Alumni are eligible to attend special leadership events such as the biannual Leaders Summit and the Annual Alumni Experience.

Courses Include:

[Academy of Leadership Online Course](#)
[Professional & Volunteer Leadership Course](#)
[Power of the Diverse Communicator Course](#)
[The Leadership Experience Course](#)
[Power of Relationships Course](#)
[Annual Alumni Experience](#)

Help Wanted...

Want to help grow our chapter? Know lots of people who could benefit from membership? Have contacts in firms that aren't already members?

Your membership committee needs YOU! Join the membership committee and help EWI of Tulsa reach our goal of 10 new member firms in 2010!

Committee meets once a month. Contact Nicki Boone at 307.4017 or nicki.boone@jqh.com

Remember when...

...you were a new member? How you just needed someone to show you the ropes and be a pal until you got to know some people? How grateful you were when you found out you'd been assigned a mentor?

EWI of Tulsa really needs YOU to step up and mentor a new member. It's easy and it makes a difference.

Call Nicki Boone at 307-4017 to volunteer. You may even make a new friend!



EWI of Tulsa joins Facebook!

The page is still under development and off to a great start thanks to Nancy Hillman, American Heart Association, who volunteered to be our Social Media function leader. If you would like to join the group, contact Nancy Hillman at nancy.hillman@heart.org or 712-4005.



Kindle the taper like the steadfast star
 Ablaze on evening's forehead o'er the earth,
 And add each night a lustre till afar
 An eightfold splendor shine above thy hearth. ~Emma Lazarus, "The Feast of Lights"



November Meeting Highlights



Check in is always a busy place!



Guest Tammy Breen; Sarah Diehl, World Travel Service; and Bassima Roz, Tulsa Marriott Southern Hills



Mary Morrow, Zarrow Family Office, and Sue Springwater, a sustaining member



Aren't door prizes great?



Tammie Blessing, JPMorgan Chase & Co.; Lesa Johnson, Pepsi Bottling Company; and Pat Desormeau, Oklahoma Manufacturing Alliance



Susan Richmond and Amie Schlosberg, both of Linde Process Plants, Inc.



November Meeting Highlights



Ways and Means Committee



The Ways & Means Committee is having a **"Name the Event" contest** for the upcoming 2010 Scholastic Classic to be held on our normal meeting date, Thursday, April 8, 2010.

As announced last month, the theme revolves around the Roaring 20's. Please submit your entries ASAP to Lesa Johnson at ljohns18@pepsi.com. Lesa promises the winner will win a great prize!

After a lot of scouting, the place for the meeting has been chosen. April's Scholastic Classic will be at the Bernsen Community Center in downtown Tulsa at 7th and Boston. So now is the time to start talking to your Executives about sponsorship opportunities and/or a donation for the auction.

The next meeting of the Ways & Means Committee is scheduled for Monday, December 7 at 5:30 p.m., at Pepsi, 510 West Skelly Drive. Contact Lesa Johnson for more information: ljohns18@pepsi.com.



Please NOTE....due to the Holidays, the January Connect will be distributed the first week in January rather than the end of December! Submission deadline is December 18. Feel free to submit earlier to maureen@okalliance.com.



Reading Rally Update

As of the last collection from November's meeting, we exceeded, by far, the goal set for number of books for the Reading Rally. I am happy to announce that we have exceeded our goal and collected over 600 books for The Children's Hospital at Saint Francis! Jessica Bolen, Margaret Harrison, and Susan Richmond were on Channel 6 news on November 30 for a quick snippet on our giving of the books. An announcement will be made in the spring regarding the actual reading time for the summer. Thanks to all who made the Reading Rally such a success!

In Loving Memory

Talesa Samuel-Murphy unexpectedly left this world on Tuesday, November 24, 2009. A beautiful lady with a caring heart, calming voice, and a luminous smile that lit up a room, she was a treasure to work with professionally and a blessing to have on our board and as an EWI sister.

Representing EWI Member Firm, Doubletree Hotel Downtown Tulsa, Talesa was serving as the 2009-2010 Business and Career Development Program (B/C/DP) Director. She had joined EWI in September of 2007, and in 2008 took on the coordination of the gift donations for the Gatesway Foundation holiday philanthropy project. B/C/DP Director was the natural next step and Talesa served our Chapter proudly and exhibited great enthusiasm for EWI. As the B/C/DP Director, she had worked closely with the 2009 Reading Rally Committee as they collected over 600 books for donation to the Children's Hospital at Saint Francis.

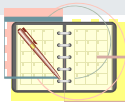
Talesa leaves behind her husband, John Murphy, two sons, Moses and Dallas, and her baby daughter Annalea. She will be dearly missed by her EWI sisters.



Our lovely Talesa at the Board Retreat held in late August.



Dates to Remember



EVENT	TIME	DATE	LOCATION
Ways & Means Committee Meeting	5:30 p.m.	Monday, December 7	The Pepsi Bottling Company
December Chapter Meeting	5:30 p.m.	Thursday, December 10	Bella Gardens Wedding Chapel & Banquet Facility
Membership Committee Meeting	12:00 p.m.	Wednesday, December 16	Tulsa Renaissance Hotel & Convention Center
Board of Directors Meeting	11:45 a.m.	Thursday, December 17	Montereau
EWI Spring Conference		April 22—24, 2010	Memphis, TN
EWI Leadership Conference & Annual Meeting		September 23—25, 2010	Kansas City, MO

OUR MISSION

EWI brings together key individuals from diverse businesses for the purpose of:

- promoting member firms,
- enhancing personal and professional development, and
- encouraging community involvement.

OUR VISION

To be a professional organization that creates value for its member firms and their representatives through career development, business connectivity, and involvement in local communities.

COURTESY NOTICES

Do you have news that you would like to share with the membership—births, deaths, illnesses, or even a job promotion? Maybe there is a job opening at your firm, and you want to network it. Courtesy Function Leader Tonya Jimenez sends that information to all Tulsa Reps via a “Courtesy Notice.”

Please send your news to Tonya Jimenez at tonya.jimenez@jqh.com.

SHARE THE NEWS AND THE PHOTOS!



Do you have news to share? A committee that needs help? A firm “special” to offer to the membership? Pictures for the last meeting or a committee meeting? Please send all submissions for the Connect to:

Contact: Maureen Quinn
 Phone: 592-0722
 E-mail: maureen@okalliance.com.

January submission deadline: December 18.

It would be helpful to have the information in “cut and paste” format. Thank you.

EWI OF TULSA DIRECTORY UPDATES

Please provide any updates for the directory to Maureen Quinn, Oklahoma Manufacturing Alliance. Call 592-0722; fax 592-1417; or email maureen@okalliance.com.

EWI Corporate Updates
www.ewiconnect.com

Check your member information on the Corporate Website and update your profile online. If you do not have access to email/internet, Maureen can also help you, so call or fax your updated information. The Corporate Directory is published from your profile on the Corporate Website.

